

# Cotterman®

## Complete Guide to **ALL** **Cotterman®** Products



**Workmaster**  
WMX05R37A9P3

- Rolling Metal Ladders
- Workmaster™ Super Duty Ladders
- StockNStore™
- Work Platforms
- Office Ladders
- Step Stands and Stools Crossover
- Bridges
- Specialty Products
- The Maxi Lift®
- Self-Closing Safety Gates
- Aluminum Railings
- Fixed Ladders
- Track Ladders
- Custom Solutions



**Cotterman®**

# PRODUCT SELECTION GUIDE

The task of choosing the correct ladder or Cotterman® product for your needs can be a daunting one. So please use this book to guide you through the selection process. If you already know what you're looking for, that's great! If not, please allow us to help you find it!

Simply select a product category, and we'll help you with the process of selecting the ladder that best suits your needs. If you have any questions concerning any of our products, please feel free to contact our Customer Service department.



## rolling metal ladders

The industry standard rolling warehouse ladder. With many options, such as tread, climb angle, SafeLock, and multi-directional wheels, Cotterman® Rolling Metal Ladders are sure to elevate your productivity.



## Workmaster™

The Workmaster® Super-Duty Rolling Metal Ladder stands alone. It's heavy duty construction gives it a 1,000 lb. load capacity, and makes it more damage resistant than almost any other ladder.



## STOCK 'N STORE™

The Stock 'N Store® folding rolling ladder is a perfect solution for small retail stores and tight work spaces. The ladder is lightweight, folds quickly, and stores easily. One of the most versatile rolling ladders available today.



## WORK STANDS / PLATFORMS

The Series WP has a work area with a larger platform to provide room for tools and/or an additional person. The Cotterman® SafeLock option is available, in case frequent movement is anticipated.



## OFFICE LADDERS

Combining the high quality construction of our industrial ladders with an attractive design and finish that suits the office, or any environment. Three handrail configurations are available. Available in 12 colors.



## STEP STANDS and STOOLS

Heavy duty construction allows for a 500 lb. load capacity. Superior engineering allows for a very stable and easy to move step stand that is great for almost any work environment where a quick step up is needed.



## CROSSOVER BRIDGES

Crossover bridges provide safe walkways over a variety of obstacles such as conveyors, machines, and pipes. Legs mount to the floor and load capacity is 500 lbs. Available in standard or space saver models.



## SPECIALTY PRODUCTS

We also offer a wide variety of "specialty products" for users who have a need for something more specific and tailored to their use. Whether you need built-in shelving or a cantilever, we have you covered.



## The Maxi Lift®

The Cotterman® Maxi Lift line of push-around lifts sets the standard for quality and reliability. Meets or exceeds all applicable standards, including ANSI A92.3-1990, plus proposed changes.



## SELF-CLOSING SAFETY GATES

Cotterman® adjustable self closing safety gates assist your facility in meeting OSHA and ANSI requirements for guarding ladderway openings.



## ALUMINUM RAILINGS

Cotterman® Railings provide a sure & strong barrier. Lightweight aluminum construction is weather resistant and makes installation quick and easy.



## FIXED LADDERS

Often referred to as "wall-mounted, roof access or hatch ladders". Cotterman® Fixed Ladders are available with or without cages and handrails, and are available in Steel, Aluminum and Stainless Steel.



## TRACK LADDERS

Quick access. Easy to use. Easy to store. An exclusive design permits storage of the ladder in a tight vertical position against shelves when not in use and allows easy passage of persons or equipment in the aisle.



## CUSTOM SOLUTIONS

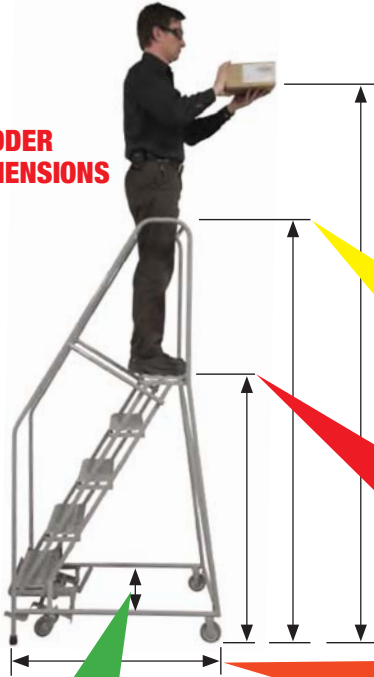
Still don't see what you're looking for? We also design and built custom products, built to our customers' exact specification. Our helpful sales staff and engineers are more than happy to help you fit your needs exactly.

# rolling metal ladders™

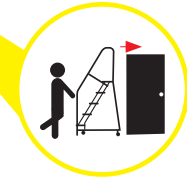
## FIRST THING'S FIRST

First, we need to determine what size ladder you need. One of the most common mistakes made in ordering many ladders is getting them too large for the available workspace. Here are some things to consider before ordering your new ladder:

### 1 LADDER DIMENSIONS



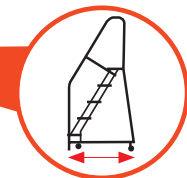
**Working height** is the approximate height that you would like to be able to comfortably reach. It is usually calculated at 5.5' above the ladder's platform height.



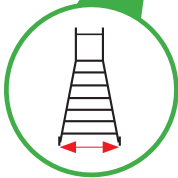
**Overall height** is VERY important. You want to be sure that your ladder will not be too tall to fit into your workspace. This includes being able to fit through any doors that you may need to move it through, or under any ceilings or fixtures that you may have.



**Top Step height** is the measurement of the top step from the ground. It's important that this measurement is not too far above or below your desired working height.



**Base length** is the measurement of how long the base of the ladder runs. This is dependent upon the height of the ladder. The taller the ladder, the longer the base. Also lower climb angles increase base length.



**Base width** is also very important because as ladders get taller, the base width increases. It is important to be sure that the ladder will not be too wide for your workspace. We offer different tread widths to accommodate most work areas.

Options such as deeper top steps are available, and will increase the base length. Top steps are available in 10" - 12"(standard), 20" - 24", and 30".

### 2 TREAD WIDTH

Cotterman® offers various tread widths to accommodate almost any situation. So, it is up to you, the user, to determine how and where the ladder will be most commonly used. Our treads vary in widths from 16" to 30" to allow for space, storage and usage constraints or requirements.



#### 16" TREAD WIDTH

The 16" tread is ideal for users who require a more narrow ladder due to space restrictions, such as a narrow aisle or cramped areas.



#### 24" TREAD WIDTH

The 24" tread is our "standard" width. It is the most commonly used size and offers versatility in most workspaces.



#### 30" TREAD WIDTH

The 30" tread is great for users who will be using the ladder in larger areas. It is also ideal for those who may be carrying larger items up and down the ladder frequently.

### TREAD TYPES

Cotterman® offers a variety of tread types to suit your needs. So, no matter what environment your ladder will be in, we have a tread that will offer the optimal grip.



#### Perforated (A6)

Perforated holes provide excellent slip resistance.



#### Expanded Metal (A1)

Open step design prevents debris buildup.



#### Vinyl (A2)

Solid metal step with nonslip ribbed vinyl tread. Ideal for use in office, retail or industrial environments.



#### Serrated (A3)

Open step Premium Serrated Tread. For rugged applications.



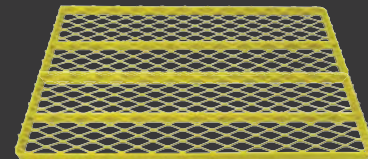
#### Extruded Aluminum (A4)

### TOP STEP OPTIONS

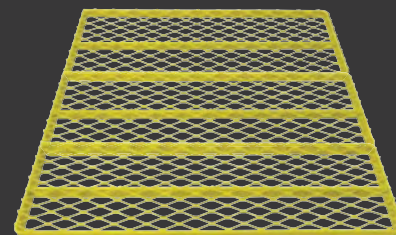
On most Cotterman® Rolling Metal Ladders, we offer Deep Top Step options. Depending on ladder series the standard top step is 10"-12" deep, but 20"-24" and 30" options are available for larger standing area. Series "A" top step is 14" deep top step only.



**STANDARD**  
10" - 12"



**DEEP**  
20" - 24"



**EXTRA DEEP**  
30"

## WHEELS & CASTERS

Our Rolling Metal ladder series comes equipped with one of five wheel and caster systems. So, your ladder will move smoothly and easily to the next job, every time.

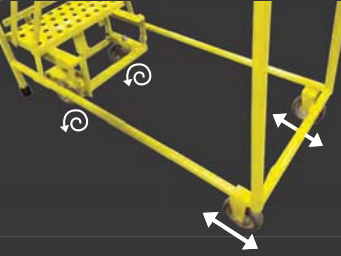


360° mobility

### Spring-Loaded Casters

Multi-Directional Mobility. Allows 360° mobility.

1-4 step ladders have spring-loaded casters that retract whenever weight is applied.



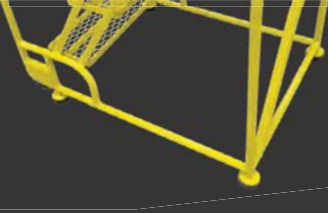
### SafeLock™ with 4" wheels

Foot-activated locking mechanism with swivel casters and rigid rear wheels. Available on 4-step & above.



### Dual End SafeLock™ with Multi-directional 4" wheels

Swivel casters on front and back. Allows 360° mobility. Available on 5-step & above.



### TiltNRoll™

The TILT-N-ROLL® features a special balanced design that allows it to tilt easily to the rolling position when pulled toward the user. Available in 2-6 step models.



### 10" SOLID RUBBER WHEELS

10" rubber wheels for easy portability, even on rough surfaces.

## CLIMBING ANGLE

Cotterman® offers 2 climbing angles in our Rolling Metal Ladders. 59° is standard and the 50° climbing angle makes carrying items up and down the ladder easier.



59° Climbing Angle

**Standard on:**  
**1000 series**  
 450lb load rating  
**1500 series**  
 450lb load rating



50° Climbing Angle

**Standard on:**  
**1200 series** — 450lb load rating  
**1700 series** — 450lb load rating  
**2600 series** — 800lb load rating

The 50° climbing angle increases base length measurements.

## 3

### LOAD RATING

Load rating is also very important. It is the measurement of the total weight that the ladder is built to support. This includes the user's weight combined with any objects or materials that they may be carrying up and down.

### 350-450 lbs.

One person, general use.

### 500 lbs.

One person, heavy-duty use.

### 800 lbs.

Heavy-duty ladders and two person work platforms.

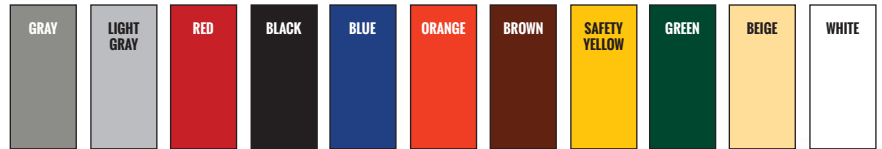
### 1,000 lbs.

One person, Super-duty ladders.



## COLOR OPTIONS

Cotterman® offers a variety of powder-coated colors to suit your needs. Choose from any of the following 11 colors.



**R2C**  
 READY TO CLIMB

**SHIPS FULLY SET-UP AND READY TO USE**



**PARTIALLY ASSEMBLED**

**MAJOR COMPONENTS ARE PRE-ASSEMBLED**



- Arrives fully set-up and ready to use
- ZERO assembly time
- Available in 1-12 step models
- Reduced risk of freight damage

- Ships at a lower freight class
- Major components are pre-assembled for faster, easier assembly time
- Available in 3-19 step models
- Larger models (12-19 step) palletized for ease of handling

**NOTE:** Rolling ladders ship either set up or unassembled (knocked-down). When possible, most customers prefer set-up – there is zero assembly time and they are less likely to get damaged in transit, which can delay the ladder going into use. We take care to ensure, though, that every ladder arrives damage free and on time. Shipping with our preferred carrier from one of our four manufacturing locations provides the best assurance of the right ladder for your needs when you need it.

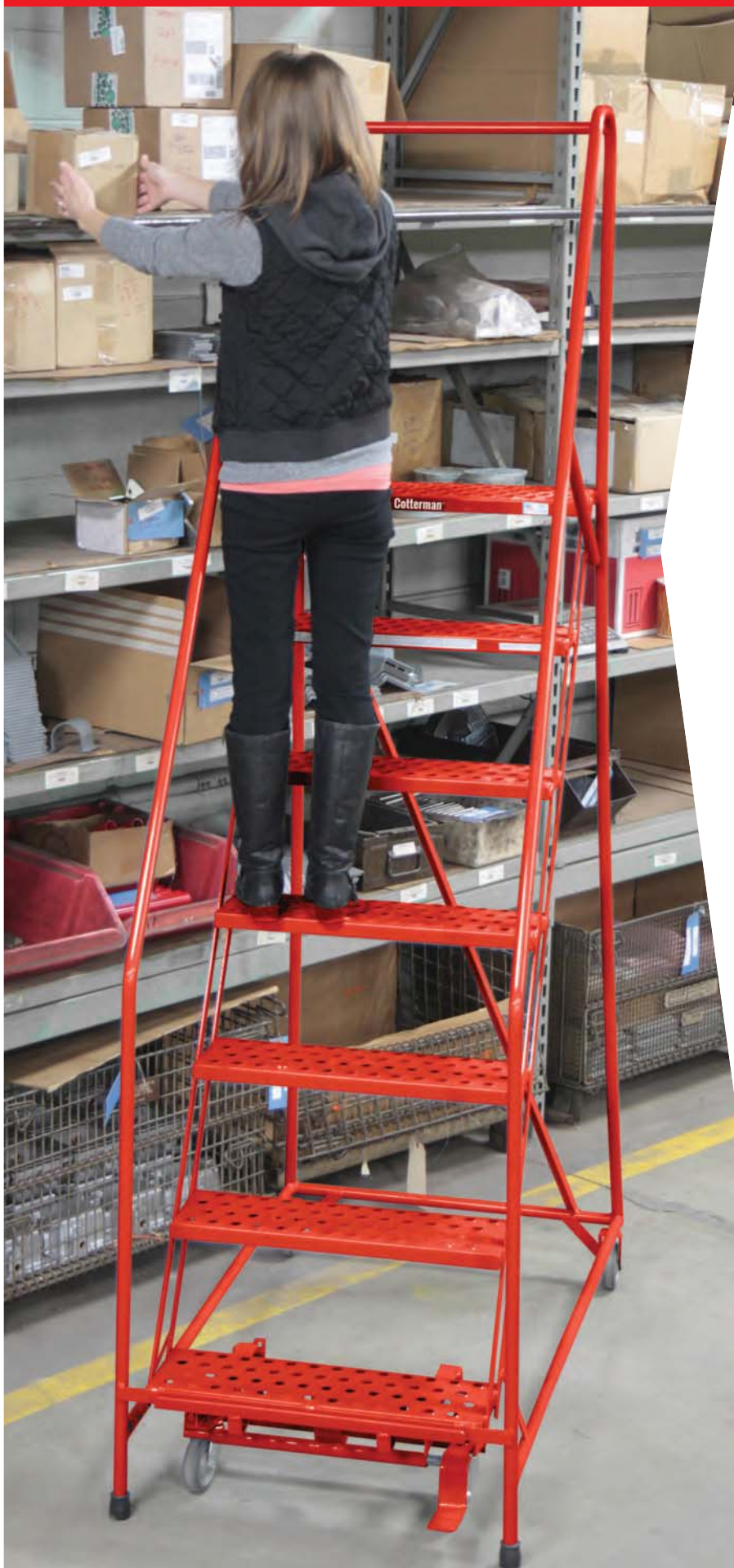
rolling metal ladders™

OUR  
MOST POPULAR SERIES!

**R2C**  
READY TO CLIMB  
zero assembly time.

# SERIES 1000

Rolling Metal Ladders



1008R2632A1



# The industry **STANDARD!**

COTTERMAN® SERIES 1000 is our flagship product line. The value added features of this product make it our best seller. Ships set-up from one of our four locations, reducing freight costs and damage. Plus, when it arrives, it goes directly in to use.

- 450 lb. load rating.
- 59° climb angle.
- All tube members are 1" steel tube construction.
- Steps are 7" deep in your choice of tread.
- Top steps are 10", 20" or 30" deep.
- Spring-loaded 2" casters are used on 1 to 4 step ladders. The Cotterman® SafeLock is used on 5 step ladders and above.
- Gray powder coat is the standard finish.
- Series 1000 ladders meet applicable OSHA and ANSI standards.
- CAL-OSHA models also available.



1007R2630A6



## SERIES 1000 Rolling Metal Ladders MODEL NUMBERS & MEASUREMENTS

**LOAD RATING  
450 LBS.**

| DESCRIPTION            | TOP STEP HEIGHT | OVERALL HEIGHT | WORKING HEIGHT (approx.) | 16" TREAD WIDTH |            |             | 24" TREAD WIDTH |              |            | 30" TREAD WIDTH (A6 not available) |             |              |            |             |             |
|------------------------|-----------------|----------------|--------------------------|-----------------|------------|-------------|-----------------|--------------|------------|------------------------------------|-------------|--------------|------------|-------------|-------------|
|                        |                 |                |                          | MODEL NUMBER    | BASE WIDTH | BASE LENGTH | WEIGHT LBS.     | MODEL NUMBER | BASE WIDTH | BASE LENGTH                        | WEIGHT LBS. | MODEL NUMBER | BASE WIDTH | BASE LENGTH | WEIGHT LBS. |
| 1 STEP NO HANDRAILS    | 12"             | 12"            | 78"                      | 1001N1818       | 18"        | 16"         | 18              | 1001N2626    | 26"        | 16"                                | 29          | --           | --         | --          | --          |
| 1 STEP WITH HANDRAILS  | 12"             | 16"            | 78"                      | 1001G1818       | 18"        | 16"         | 19              | 1001R2626    | 26"        | 16"                                | 26          | --           | --         | --          | --          |
| 2 STEP NO HANDRAILS    | 20"             | 20"            | 86"                      | 1002N1818       | 18"        | 19"         | 25              | 1002N2626    | 26"        | 19"                                | 29          | --           | --         | --          | --          |
| 2 STEP WITH HANDRAILS  | 20"             | 50"            | 86"                      | 1002R1818       | 18"        | 19"         | 37              | 1002R2626    | 26"        | 19"                                | 36          | --           | --         | --          | --          |
| 3 STEP NO HANDRAILS    | 30"             | 30"            | 96"                      | 1003N1820       | 20"        | 26"         | 41              | 1003N2630    | 30"        | 26"                                | 42          | --           | --         | --          | --          |
| 3 STEP WITH HANDRAILS  | 30"             | 60"            | 96"                      | 1003R1820       | 20"        | 26"         | 43              | 1003R2630    | 30"        | 26"                                | 50          | --           | --         | --          | --          |
| 4 STEP NO HANDRAILS    | 40"             | 40"            | 106"                     | 1004N1820       | 20"        | 31"         | 45              | 1004N2630    | 30"        | 31"                                | 53          | 1004N3232    | 32"        | 31"         | 66          |
| 4 STEP WITH HANDRAILS  | 40"             | 70"            | 106"                     | 1004R1820       | 20"        | 31"         | 53              | 1004R2630    | 30"        | 31"                                | 61          | 1004R3232    | 32"        | 31"         | 74          |
| 5 STEP WITH HANDRAILS  | 50"             | 80"            | 116"                     | 1005R1820       | 20"        | 40"         | 81              | 1005R2630    | 30"        | 40"                                | 97          | 1005R3232    | 32"        | 40"         | 113         |
| 6 STEP WITH HANDRAILS  | 60"             | 90"            | 126"                     | 1006R1824       | 24"        | 46"         | 95              | 1006R2630    | 30"        | 46"                                | 109         | 1006R3232    | 32"        | 46"         | 128         |
| 7 STEP WITH HANDRAILS  | 70"             | 100"           | 136"                     | 1007R1824       | 24"        | 53"         | 105             | 1007R2630    | 30"        | 53"                                | 121         | 1007R3232    | 32"        | 53"         | 143         |
| 8 STEP WITH HANDRAILS  | 80"             | 110"           | 146"                     | 1008R1824       | 24"        | 61"         | 131             | 1008R2632    | 32"        | 61"                                | 154         | 1008R3232    | 32"        | 61"         | 179         |
| 9 STEP WITH HANDRAILS  | 90"             | 120"           | 156"                     | 1009R1824       | 24"        | 67"         | 143             | 1009R2632    | 32"        | 67"                                | 166         | 1009R3232    | 32"        | 67"         | 195         |
| 10 STEP WITH HANDRAILS | 100"            | 130"           | 166"                     | --              | --         | --          | --              | 1010R2632    | 32"        | 74"                                | 179         | 1010R3232    | 32"        | 74"         | 211         |
| 11 STEP WITH HANDRAILS | 110"            | 140"           | 176"                     | --              | --         | --          | --              | 1011R2632    | 32"        | 81"                                | 191         | 1011R3232    | 32"        | 81"         | 226         |
| 12 STEP WITH HANDRAILS | 120"            | 150"           | 186"                     | --              | --         | --          | --              | 1012R2632    | 32"        | 88"                                | 215         | 1012R3232    | 32"        | 88"         | 250         |

## SERIES 1500

### Partially-Assembled, Standard Angle Ladders

**COTTERMAN® SERIES 1500** is the "assembly required" version of our 1000 series. Packaged for shipping at a lower freight class, the ladders require approx. 15 - 30 minutes to assemble, depending on size. This series has the most selection of all of our products, ranging from three to sixteen steps.

- 450 lb. load rating.
- 59° climb angle.
- All tube members are 1" steel tube construction.
- Steps are 7" deep in your choice of tread.
- Top steps are 10", 20" or 30" deep.
- Spring-loaded 2" casters are used on 3 & 4 step ladders. The Cotterman® SafeLock is used on 5 step ladders and above.
- Gray powder coat is the standard finish.
- Series 1500 ladders meet applicable OSHA and ANSI standards.
- CAL-OSHA models also available.



1511R2632A1  
(WITH 20" DEEP TOP STEP)



1516R2642A6



**LOAD RATING  
450 LBS.**

### SERIES 1500 Rolling Metal Ladders MODEL NUMBERS & MEASUREMENTS

| DESCRIPTION   | TOP STEP HEIGHT | OVERALL HEIGHT | WORKING HEIGHT (approx.) | 16" TREAD WIDTH |            |             |               | 24" TREAD WIDTH |            |             |               | 30" TREAD WIDTH (A6 not available) |            |             |               |
|---|-----------------|----------------|--------------------------|-----------------|------------|-------------|---------------|-----------------|------------|-------------|---------------|------------------------------------|------------|-------------|---------------|
|   |                 |                |                          | MODEL NUMBER    | BASE WIDTH | BASE LENGTH | SHP. WT. LBS. | MODEL NUMBER    | BASE WIDTH | BASE LENGTH | SHP. WT. LBS. | MODEL NUMBER                       | BASE WIDTH | BASE LENGTH | SHP. WT. LBS. |
| 3 STEP WITH HANDRAILS   | 30"             | 60"            | 96"                      | 1503R1820       | 20"        | 26"         | 52            | 1503R2630       | 30"        | 26"         | 60            | --                                 | --         | --          | --            |
| 4 STEP WITH HANDRAILS   | 40"             | 70"            | 106"                     | 1504R1820       | 20"        | 31"         | 61            | 1504R2630       | 30"        | 31"         | 71            | 1504R3232                          | 32"        | 31"         | 86            |
| 5 STEP WITH HANDRAILS   | 50"             | 80"            | 116"                     | 1505R1820       | 20"        | 40"         | 93            | 1505R2630       | 30"        | 40"         | 109           | 1505R3232                          | 32"        | 40"         | 126           |
| 6 STEP WITH HANDRAILS   | 60"             | 90"            | 126"                     | 1506R1824       | 24"        | 46"         | 110           | 1506R2630       | 30"        | 46"         | 126           | 1506R3232                          | 32"        | 46"         | 147           |
| 7 STEP WITH HANDRAILS   | 70"             | 100"           | 136"                     | 1507R1824       | 24"        | 53"         | 120           | 1507R2630       | 30"        | 53"         | 138           | 1507R3232                          | 32"        | 53"         | 162           |
| 8 STEP WITH HANDRAILS   | 80"             | 110"           | 146"                     | --              | --         | --          | --            | 1508R2632       | 32"        | 61"         | 161           | 1508R3232                          | 32"        | 61"         | 187           |
| 9 STEP WITH HANDRAILS   | 90"             | 120"           | 156"                     | --              | --         | --          | --            | 1509R2632       | 32"        | 67"         | 174           | 1509R3232                          | 32"        | 67"         | 202           |
| 10 STEP WITH HANDRAILS  | 100"            | 130"           | 166"                     | --              | --         | --          | --            | 1510R2632       | 32"        | 74"         | 186           | 1510R3232                          | 32"        | 74"         | 218           |
| 11 STEP WITH HANDRAILS  | 110"            | 140"           | 176"                     | --              | --         | --          | --            | 1511R2632       | 32"        | 81"         | 199           | 1511R3232                          | 32"        | 81"         | 233           |
| <b>12 STEP LADDERS AND UP REQUIRE A PALLET FOR SHIPPING AT ADDITIONAL COST.</b> |                 |                |                          |                 |            |             |               |                 |            |             |               |                                    |            |             |               |
| 12 STEP WITH HANDRAILS  | 120"            | 162"           | 188"                     | --              | --         | --          | --            | 1512R2632       | 32"        | 88"         | 299           | 1512R3232                          | 32"        | 88"         | 355           |
| 13 STEP WITH HANDRAILS  | 130"            | 172"           | 198"                     | --              | --         | --          | --            | 1513R2642       | 42"        | 95"         | 329           | 1513R3242                          | 42"        | 95"         | 390           |
| 14 STEP WITH HANDRAILS  | 140"            | 182"           | 208"                     | --              | --         | --          | --            | 1514R2642       | 42"        | 101"        | 350           | 1514R3242                          | 42"        | 101"        | 415           |
| 15 STEP WITH HANDRAILS  | 150"            | 192"           | 218"                     | --              | --         | --          | --            | 1515R2642       | 42"        | 108"        | 407           | 1515R3242                          | 42"        | 108"        | 439           |
| 16 STEP WITH HANDRAILS  | 160"            | 202"           | 228"                     | --              | --         | --          | --            | 1516R2642       | 42"        | 114"        | 430           | 1516R3242                          | 42"        | 114"        | 463           |





# SERIES 1200 & 1700

## Easy 50° Climbing Angle Ladders

THE SERIES 1200 ships ready-to-use up to 8 steps.

THE SERIES 1700 are 9 step and above and are shipped partially assembled.



- 450 lb. load rating.
- 50° climb angle.
- All tube members are 1" steel tube construction.
- Steps are 7" deep in your choice of tread.
- Top steps are 12" or 24" deep.
- Spring-loaded 2" casters are used on 3 & 4 step ladders. The Cotterman® SafeLock is used on 5 step ladders and above.
- Gray powder coat is the standard finish.
- Series 1200 & 1700 ladders meet applicable OSHA and ANSI standards.
- CAL-OSHA models also available.

Easy 50

1208R2632A3  
(WITH 24" DEEP TOP STEP)

1203R1820A2



SERIES 1200 ships fully-assembled • SERIES 1700 ships partially-assembled

LOAD RATING  
450 LBS.

| DESCRIPTION   | TOP STEP HEIGHT | OVERALL HEIGHT | WORKING HEIGHT (approx.) | 16" TREAD WIDTH |            |             | 24" TREAD WIDTH |              |            | 30" TREAD WIDTH (PERFORATED TREAD NOT AVAILABLE) |             |              |            |             |             |
|---|-----------------|----------------|--------------------------|-----------------|------------|-------------|-----------------|--------------|------------|--|-------------|--------------|------------|-------------|-------------|
|   |                 |                |                          | MODEL NUMBER    | BASE WIDTH | BASE LENGTH | WEIGHT LBS.     | MODEL NUMBER | BASE WIDTH | BASE LENGTH                                      | WEIGHT LBS. | MODEL NUMBER | BASE WIDTH | BASE LENGTH | WEIGHT LBS. |
| 3 STEP NO HANDRAILS   | 30"             | 30"            | 96"                      | 1203N1820       | 20"        | 32"         | 39              | 1203N2630    | 30"        | 32"  | 46          | --           | --         | --          | --          |
| 3 STEP WITH HANDRAILS   | 30"             | 60"            | 96"                      | 1203R1820       | 20"        | 32"         | 46              | 1203R2630    | 30"        | 32"  | 54          | --           | --         | --          | --          |
| 4 STEP NO HANDRAILS   | 40"             | 40"            | 106"                     | 1204N1820       | 20"        | 40"         | 49              | 1204N2630    | 30"        | 40"  | 58          | 1204N3232    | 32"        | 40"         | 67          |
| 4 STEP WITH HANDRAILS   | 40"             | 70"            | 106"                     | 1204R1820       | 20"        | 40"         | 56              | 1204R2630    | 30"        | 40"  | 65          | 1204R3232    | 32"        | 40"         | 79          |
| 5 STEP WITH HANDRAILS   | 50"             | 80"            | 116"                     | 1205R1820       | 20"        | 51"         | 86              | 1205R2630    | 30"        | 51"  | 100         | 1205R3232    | 32"        | 51"         | 116         |
| 6 STEP WITH HANDRAILS   | 60"             | 90"            | 126"                     | 1206R1824       | 24"        | 60"         | 108             | 1206R2630    | 30"        | 60"  | 123         | 1206R3232    | 32"        | 60"         | 143         |
| 7 STEP WITH HANDRAILS   | 70"             | 100"           | 136"                     | 1207R1824       | 24"        | 69"         | 125             | 1207R2630    | 30"        | 69"  | 142         | 1207R3232    | 32"        | 69"         | 165         |
| 8 STEP WITH HANDRAILS   | 80"             | 110"           | 146"                     | 1208R1824       | 24"        | 78"         | 139             | 1208R2632    | 32"        | 78"  | 159         | 1208R3232    | 32"        | 78"         | 184         |
| 9 STEP WITH HANDRAILS   | 90"             | 120"           | 156"                     | --              | --         | --          | --              | 1709R2632    | 32"        | 87"  | 187         | 1709R3232    | 32"        | 87"         | 216         |
| 10 STEP WITH HANDRAILS  | 100"            | 130"           | 166"                     | --              | --         | --          | --              | 1710R2632    | 32"        | 97"  | 200         | 1710R3232    | 32"        | 97"         | 233         |
| 11 STEP WITH HANDRAILS  | 110"            | 140"           | 176"                     | --              | --         | --          | --              | 1711R2632    | 32"        | 106"   | 213         | 1711R3232    | 32"        | 106"        | 249         |
| <b>12 STEP LADDERS AND UP REQUIRE A PALLET FOR SHIPPING AT ADDITIONAL COST.</b> |                 |                |                          |                 |            |             |                 |              |            |  |             |              |            |             |             |
| 12 STEP WITH HANDRAILS  | 120"            | 162"           | 186"                     | --              | --         | --          | --              | 1712R2632    | 32"        | 116"   | 338         | 1712R3232    | 32"        | 116"        | 377         |
| 13 STEP WITH HANDRAILS  | 130"            | 172"           | 196"                     | --              | --         | --          | --              | 1713R2632    | 44"        | 125"   | 371         | 1713R3242    | 42"        | 125"        | 413         |
| 14 STEP WITH HANDRAILS  | 140"            | 182"           | 206"                     | --              | --         | --          | --              | 1714R2632    | 44"        | 134"   | 392         | 1714R3242    | 42"        | 134"        | 437         |
| 15 STEP WITH HANDRAILS  | 150"            | 192"           | 216"                     | --              | --         | --          | --              | 1715R2632    | 44"        | 143"   | 415         | 1715R3242    | 42"        | 143"        | 463         |

## SERIES 2600 Heavy Duty Ladders

COTTERMAN® SERIES 2600 is a superior line of partially assembled steel safety ladders. Designed and constructed for extra heavy duty use, these ladders have extra bracing and heavier materials to resist damage. They are available in 6-15 step sizes.

- 800 lb load rating.
- 50° climb angle.
- Larger 1¼" diameter tube base and back construction.
- 2½" rubber pads on front legs.
- 7" deep steps, 12" or 24" deep top step.
- Ladders are equipped with the Cotterman® SafeLock caster system.
- Gray powder coat is the standard finish.
- Series 2600 ladders meet OSHA and ANSI standards.
- CAL-OSHA models also available.



2608R2632A6



Easy 50



2608R2632A6

### SERIES 2600 MODEL NUMBERS & MEASUREMENTS

**LOAD RATING  
800 LBS.**

| DESCRIPTION   | TOP STEP HEIGHT | OVERALL HEIGHT | WORKING HEIGHT (approx.) | 24" TREAD WIDTH |            |             | 30" TREAD WIDTH (A6 not available) |              |            |             |               |
|---|-----------------|----------------|--------------------------|-----------------|------------|-------------|------------------------------------|--------------|------------|-------------|---------------|
|   |                 |                |                          | MODEL NUMBER    | BASE WIDTH | BASE LENGTH | SHP. WT. LBS.                      | MODEL NUMBER | BASE WIDTH | BASE LENGTH | SHP. WT. LBS. |
| 6 STEP WITH HANDRAILS   | 60"             | 90"            | 126"                     | 2606R2630       | 30"        | 60"         | 132                                | --           | --         | --          | --            |
| 7 STEP WITH HANDRAILS   | 70"             | 100"           | 136"                     | 2607R2630       | 30"        | 69"         | 144                                | --           | --         | --          | --            |
| 8 STEP WITH HANDRAILS   | 80"             | 110"           | 146"                     | 2608R2632       | 32"        | 78"         | 170                                | --           | --         | --          | --            |
| 9 STEP WITH HANDRAILS   | 90"             | 120"           | 156"                     | 2609R2632       | 32"        | 87"         | 193                                | 2609R3232    | 32"        | 87"         | 223           |
| 10 STEP WITH HANDRAILS  | 100"            | 130"           | 166"                     | 2610R2632       | 32"        | 97"         | 207                                | 2610R3232    | 32"        | 97"         | 240           |
| 11 STEP WITH HANDRAILS  | 110"            | 140"           | 176"                     | 2611R2632       | 32"        | 106"        | 222                                | 2611R3232    | 32"        | 106"        | 257           |
| <b>12 STEP LADDERS AND UP REQUIRE A PALLET FOR SHIPPING AT ADDITIONAL COST.</b> |                 |                |                          |                 |            |             |                                    |              |            |             |               |
| 12 STEP WITH HANDRAILS  | 120"            | 162"           | 186"                     | 2612R2632       | 32"        | 116"        | 327                                | 2612R3232    | 32"        | 116"        | 384           |
| 13 STEP WITH HANDRAILS  | 130"            | 172"           | 196"                     | 2613R2642       | 42"        | 125"        | 358                                | 2613R3242    | 42"        | 125"        | 420           |
| 14 STEP WITH HANDRAILS  | 140"            | 182"           | 206"                     | 2614R2642       | 42"        | 134"        | 379                                | 2614R3242    | 42"        | 134"        | 445           |
| 15 STEP WITH HANDRAILS  | 150"            | 192"           | 216"                     | 2615R2642       | 42"        | 143"        | 401                                | 2615R3242    | 42"        | 143"        | 472           |

rolling metal ladders™

**R2C**<sup>™</sup>  
READY TO CLIMB  
zero assembly time.

SERIES

"A"



A3R2630A4



A5R2630A4



A3N1822A3

# SERIES "A"

## Welded Aluminum Ladders

COTTERMAN® ALUMINUM SERIES "A" LADDERS ship set-up and ready-to-use.

In addition to being lightweight, aluminum ladders are corrosion resistant and unpainted. They are also non-magnetic.

- 350 lb. load rating.
- Both the steps and the top step are 16" or 24" wide. The steps are 7" deep. The top step is 14" deep.
- All ladders are provided with 2" spring-loaded casters.
- Unpainted, aluminum finish.
- Series "A" aluminum ladders meet applicable OSHA and ANSI standards.
- Cal-OSHA models also available.



### Series "A" Available Treads



Ribbed (A4)



Serrated (A3)

## SERIES "A" MODEL NUMBERS & MEASUREMENTS

**LOAD RATING  
350 LBS.**

| DESCRIPTION           | TOP STEP HEIGHT | OVERALL HEIGHT | WORKING HEIGHT (approx.) | 16" TREAD WIDTH |            |             | 24" TREAD WIDTH |              |            |             |               |
|-----------------------|-----------------|----------------|--------------------------|-----------------|------------|-------------|-----------------|--------------|------------|-------------|---------------|
|                       |                 |                |                          | MODEL NUMBER    | BASE WIDTH | BASE LENGTH | SHP. WT. LBS.   | MODEL NUMBER | BASE WIDTH | BASE LENGTH | SHP. WT. LBS. |
| 1 STEP NO HANDRAILS   | 12"             | 12"            | 78"                      | A1N1818         | 18"        | 20"         | 13              | A1N2626      | 26"        | 20"         | 14            |
| 2 STEP NO HANDRAILS   | 20"             | 20"            | 86"                      | A2N1818         | 18"        | 23"         | 16              | A2N2626      | 26"        | 23"         | 20            |
| 2 STEP WITH HANDRAILS | 20"             | 50"            | 86"                      | A2R1818         | 18"        | 23"         | 19              | A2R2626      | 26"        | 23"         | 21            |
| 3 STEP NO HANDRAILS   | 30"             | 30"            | 96"                      | A3N1822         | 22"        | 29"         | 21              | A3N2630      | 30"        | 29"         | 25            |
| 3 STEP WITH HANDRAILS | 30"             | 60"            | 96"                      | A3R1822         | 22"        | 29"         | 24              | A3R2630      | 30"        | 29"         | 27            |
| 4 STEP NO HANDRAILS   | 40"             | 40"            | 106"                     | A4N1822         | 22"        | 36"         | 26              | A4N2630      | 30"        | 36"         | 30            |
| 4 STEP WITH HANDRAILS | 40"             | 70"            | 106"                     | A4R1822         | 22"        | 36"         | 28              | A4R2630      | 30"        | 36"         | 32            |
| 5 STEP WITH HANDRAILS | 50"             | 80"            | 116"                     | A5R1822         | 22"        | 43"         | 35              | A5R2630      | 30"        | 43"         | 39            |
| 6 STEP WITH HANDRAILS | 60"             | 90"            | 126"                     | A6R1824         | 24"        | 50"         | 39              | A6R2630      | 30"        | 50"         | 44            |
| 7 STEP WITH HANDRAILS | 70"             | 100"           | 136"                     | --              | --         | --          | --              | A7R2630      | 30"        | 57"         | 54            |
| 8 STEP WITH HANDRAILS | 80"             | 110"           | 146"                     | --              | --         | --          | --              | A8R2630      | 30"        | 63"         | 61            |

rolling metal ladders™



**R2C**<sup>™</sup>  
READY TO CLIMB  
zero assembly time.

aluminum  
**WHEELBARROW  
LADDER**



AW07R2636A3



# Aluminum Wheelbarrow Ladder

## Easy-Rolling Welded Aluminum Safety Ladders

**COTTERMAN® ALUMINUM WHEELBARROW LADDERS**  
Lightweight lift-and-roll design with 10" rubber wheels for easy portability, even on rough surfaces.

In addition to being lightweight, aluminum wheel barrow ladders are corrosion resistant and unpainted. They are also non-magnetic.

- 350 lb. load rating.
- Both the steps and the top step are 16" or 24" wide. The steps are 7" deep. Top step is 14" deep.
- 10" diameter rear wheels.
- Unpainted, aluminum finish.
- Aluminum Wheelbarrow ladders meet applicable OSHA and ANSI standards.
- Cal-OSHA models also available.

### Aluminum Wheelbarrow Ladder Available Treads



Ribbed (A4)



Serrated (A3)

## Aluminum Wheelbarrow Ladder

### MODEL NUMBERS & MEASUREMENTS



**LOAD RATING  
350 LBS.**

| DESCRIPTION            | TOP STEP HEIGHT | OVERALL HEIGHT | WORKING HEIGHT (approx.) | 16" TREAD WIDTH |            |             | 24" TREAD WIDTH |              |            |             |               |
|------------------------|-----------------|----------------|--------------------------|-----------------|------------|-------------|-----------------|--------------|------------|-------------|---------------|
|                        |                 |                |                          | MODEL NUMBER    | BASE WIDTH | BASE LENGTH | SHP. WT. LBS.   | MODEL NUMBER | BASE WIDTH | BASE LENGTH | SHP. WT. LBS. |
| 5 STEP WITH HANDRAILS  | 50"             | 80"            | 116"                     | AW05R1830       | 30"        | 48"         | 56              | AW05R2636    | 36"        | 48"         | 62            |
| 6 STEP WITH HANDRAILS  | 60"             | 90"            | 126"                     | AW06R1830       | 30"        | 55"         | 61              | AW06R2636    | 36"        | 55"         | 68            |
| 7 STEP WITH HANDRAILS  | 70"             | 100"           | 136"                     | AW07R1830       | 30"        | 62"         | 66              | AW07R2636    | 36"        | 62"         | 74            |
| 8 STEP WITH HANDRAILS  | 80"             | 110"           | 146"                     | --              | --         | --          | --              | AW08R2636    | 36"        | 68"         | 80            |
| 9 STEP WITH HANDRAILS  | 90"             | 120"           | 156"                     | --              | --         | --          | --              | AW09R2636    | 36"        | 75"         | 86            |
| 10 STEP WITH HANDRAILS | 100"            | 130"           | 166"                     | --              | --         | --          | --              | AW10R2636    | 36"        | 81"         | 92            |

rolling metal ladders™



**R2C**  
READY TO CLIMB  
zero assembly time.

# TILT 'n ROLL



**4TR26A6**  
SAFETY YELLOW (C2)



# TILT NROLL®

## Rolling Ladder

THE TiltNRoll® features a special balanced design that allows it to tilt easily to the rolling position when pulled toward the user. The user is not required to extend a foot to assist in tilting the ladder to the rolling position. Once tilted, the ladder can be easily moved from job to job on the two 4" diameter wheels.

TiltNRoll® ladders are one-piece welded assemblies shipped ready-to-use. The ladders are supplied with handrails that extend 30" above the top step.



- Steel - 450 lb. load rating.
- Aluminum - 350 lb. load rating.
- 59° climb angle.
- Rests on four 2½" rubber pads.
- 7" deep steps with 10" deep top step (standard), 20" deep top step available.
- Gray powder coat is the standard finish.
- Arrives ready to use.
- TiltNRoll® ladders meet applicable OSHA and ANSI standards.
- Cal-OSHA models also available.

### TiltNRoll® MODEL NUMBERS & MEASUREMENTS



**LOAD RATING**  
**450 LBS.**  
**ALUMINUM - 350 LBS.**

| NO. OF STEPS   | TOP STEP HEIGHT | OVERALL HEIGHT | WORKING HEIGHT (approx.) | 16" Wide x 10" Deep Top Step |            |             |               | 24" Wide x 10" Deep Top Step |            |             |               | 16" Wide x 20" Deep Top Step |            |             |               | 24" Wide x 20" Deep Top Step |            |             |               |
|--|-----------------|----------------|--------------------------|------------------------------|------------|-------------|---------------|------------------------------|------------|-------------|---------------|------------------------------|------------|-------------|---------------|------------------------------|------------|-------------|---------------|
|  |                 |                |                          | MODEL NUMBER                 | BASE WIDTH | BASE LENGTH | SHP. WT. LBS. | MODEL NUMBER                 | BASE WIDTH | BASE LENGTH | SHP. WT. LBS. | MODEL NUMBER                 | BASE WIDTH | BASE LENGTH | SHP. WT. LBS. | MODEL NUMBER                 | BASE WIDTH | BASE LENGTH | SHP. WT. LBS. |
| <b>POWDER COATED STEEL</b> standard color, gray. Available in multiple colors. |                 |                |                          |                              |            |             |               |                              |            |             |               |                              |            |             |               |                              |            |             |               |
| 2 STEP   | 20"             | 50"            | 86"                      | 2TR18                        | 20"        | 24"         | 38            | 2TR26                        | 28"        | 24"         | 43            | 2TR18E2                      | 20"        | 34"         | 49            | 2TR26E2                      | 28"        | 34"         | 60            |
| 3 STEP   | 30"             | 60"            | 96"                      | 3TR18                        | 20"        | 31"         | 47            | 3TR26                        | 28"        | 31"         | 55            | 3TR18E2                      | 20"        | 41"         | 62            | 3TR26E2                      | 28"        | 41"         | 71            |
| 4 STEP   | 40"             | 70"            | 106"                     | 4TR18                        | 20"        | 37"         | 58            | 4TR26                        | 28"        | 37"         | 66            | 4TR18E2                      | 20"        | 47"         | 72            | 4TR26E2                      | 28"        | 47"         | 83            |
| 5 STEP   | 50"             | 80"            | 116"                     | 5TR18                        | 20"        | 43"         | 68            | 5TR26                        | 28"        | 43"         | 78            | 5TR18E2                      | 20"        | 53"         | 82            | 5TR26E2                      | 28"        | 53"         | 94            |
| <b>#304 STAINLESS STEEL</b> sand blasted satin finish.                         |                 |                |                          |                              |            |             |               |                              |            |             |               |                              |            |             |               |                              |            |             |               |
| 2 STEP   | 20"             | 50"            | 86"                      | 2TS18                        | 20"        | 24"         | 54            | 2TS26                        | 28"        | 24"         | 68            | 2TS18E2                      | 20"        | 34"         | 59            | 2TS26E2                      | 28"        | 34"         | 75            |
| 3 STEP   | 30"             | 60"            | 96"                      | 3TS18                        | 20"        | 31"         | 71            | 3TS26                        | 28"        | 31"         | 86            | 3TS18E2                      | 20"        | 41"         | 77            | 3TS26E2                      | 28"        | 41"         | 95            |
| 4 STEP   | 40"             | 70"            | 106"                     | 4TS18                        | 20"        | 37"         | 88            | 4TS26                        | 28"        | 37"         | 103           | 4TS18E2                      | 20"        | 47"         | 97            | 4TS26E2                      | 28"        | 47"         | 113           |
| 5 STEP   | 50"             | 80"            | 116"                     | 5TS18                        | 20"        | 43"         | 106           | 5TS26                        | 28"        | 43"         | 117           | 5TS18E2                      | 20"        | 53"         | 116           | 5TS26E2                      | 28"        | 53"         | 133           |
| <b>ALUMINUM</b> 6061-T6 high strength alloy. Serrated tread.                   |                 |                |                          |                              |            |             |               |                              |            |             |               |                              |            |             |               |                              |            |             |               |
| 2 STEP   | 20"             | 50"            | 86"                      | 2TA18A3                      | 20"        | 24"         | 16            | 2TA26A3                      | 28"        | 24"         | 19            | 2TA18A3E2                    | 20"        | 34"         | 21            | 2TA26A3E2                    | 28"        | 34"         | 24            |
| 3 STEP   | 30"             | 60"            | 96"                      | 3TA18A3                      | 20"        | 31"         | 23            | 3TA26A3                      | 28"        | 31"         | 24            | 3TA18A3E2                    | 20"        | 41"         | 26            | 3TA26A3E2                    | 28"        | 41"         | 30            |
| 4 STEP   | 40"             | 70"            | 106"                     | 4TA18A3                      | 20"        | 37"         | 26            | 4TA26A3                      | 28"        | 37"         | 29            | 4TA18A3E2                    | 20"        | 47"         | 30            | 4TA26A3E2                    | 28"        | 47"         | 35            |
| 5 STEP   | 50"             | 80"            | 116"                     | 5TA18A3                      | 20"        | 43"         | 30            | 5TA26A3                      | 28"        | 43"         | 34            | 5TA18A3E2                    | 20"        | 53"         | 35            | 5TA26A3E2                    | 28"        | 53"         | 40            |

AVAILABLE TREADS: Expanded Steel (A1)- Steel, Stainless Steel • Serrated (A3) Steel, Stainless Steel & Aluminum • Perforated (A6) Steel only



# rolling metal ladders™

## STRADDLE BASE TILT 'N ROLL®

**R2C**  
READY TO CLIMB  
zero assembly time.

### Rolling Ladder

THE STRADDLE BASE TILT 'N ROLL® allows the front and rear of the ladder to straddle any obstructions, allowing the user to climb the ladder in tight spaces. Durable gray powder coat paint finish is standard. The rated load capacity is 350 lbs.

#### MODEL NUMBERS & MEASUREMENTS



| NO. OF STEPS | TOP STEP HEIGHT | OVERALL HEIGHT | WORKING HEIGHT (approx.) | PLATFORM SIZE 24" X 20" |            |             |               |
|--------------|-----------------|----------------|--------------------------|-------------------------|------------|-------------|---------------|
|              |                 |                |                          | MODEL NUMBER            | BASE WIDTH | BASE LENGTH | SHP. WT. LBS. |
| 3 STEP       | 30"             | 60"            | 96"                      | 3STR                    | 28"        | 41"         | 70            |
| 4 STEP       | 40"             | 70"            | 106"                     | 4STR                    | 28"        | 47"         | 86            |
| 5 STEP       | 50"             | 80"            | 116"                     | 5STR                    | 28"        | 53"         | 97            |
| 6 STEP       | 60"             | 90"            | 126"                     | 6STR                    | 28"        | 60"         | 110           |



# SERIES 6500

## Welded Steel Roll-n-Fold Ladder

THE COTTERMAN® SERIES 6500 ROLL-N-FOLD LADDER is a portable steel rolling ladder that can be folded for transporting or storage. The rear of the ladder has large 10" rubber wheels for easy portability, even on rough surfaces. Rubber pads on the front legs hold the ladder secure during use. 5 to 9 step ladders are moved by tilting and rolling it like a wheelbarrow. The B4 SafeLock is standard on 10-16 step models, but also available as an additional option on 5-9 step models.



#### SERIES 6500 MODEL NUMBERS & MEASUREMENTS

**LOAD RATING  
450 LBS.**

| DESCRIPTION            | TOP STEP HEIGHT | OVERALL HEIGHT | WORKING HEIGHT (approx.) | 16" TREAD WIDTH |            |             |               |
|------------------------|-----------------|----------------|--------------------------|-----------------|------------|-------------|---------------|
|                        |                 |                |                          | MODEL NUMBER    | BASE WIDTH | BASE LENGTH | SHP. WT. LBS. |
| 5 STEP WITH HANDRAILS  | 50"             | 80"            | 146"                     | 6505R1830       | 30"        | 46"         | 95            |
| 6 STEP WITH HANDRAILS  | 60"             | 90"            | 156"                     | 6506R1830       | 30"        | 53"         | 114           |
| 7 STEP WITH HANDRAILS  | 70"             | 100"           | 166"                     | 6507R1830       | 30"        | 58"         | 126           |
| 8 STEP WITH HANDRAILS  | 80"             | 110"           | 176"                     | 6508R1830       | 30"        | 65"         | 140           |
| 9 STEP WITH HANDRAILS  | 90"             | 120"           | 186"                     | 6509R1830       | 30"        | 72"         | 152           |
| 10 STEP WITH HANDRAILS | 100"            | 130"           | 196"                     | 6510R1830       | 30"        | 78"         | 183           |
| 11 STEP WITH HANDRAILS | 110"            | 140"           | 206"                     | 6511R1830       | 30"        | 86"         | 195           |
| 12 STEP WITH HANDRAILS | 120"            | 162"           | 216"                     | 6512R1830       | 30"        | 92"         | 309           |
| 13 STEP WITH HANDRAILS | 130"            | 172"           | 226"                     | 6513R1840       | 40"        | 99"         | 344           |
| 14 STEP WITH HANDRAILS | 140"            | 182"           | 236"                     | 6514R1840       | 40"        | 106"        | 363           |
| 15 STEP WITH HANDRAILS | 150"            | 192"           | 246"                     | 6515R1840       | 40"        | 112"        | 385           |
| 16 STEP WITH HANDRAILS | 160"            | 202"           | 256"                     | 6516R1840       | 40"        | 119"        | 405           |



- 450 lb. load rating.
- 59° climb angle.
- Rigid 1" O.D. tubular frame is designed to be folded. (*folding requires removal of 2-4 bolts*)
- Treads are 7" deep and 16" wide. The standard top step is 10" deep and 16" wide, deep tops are 20" deep by 16" wide.
- Large 10" diameter solid rubber wheels.
- Ships partially-assembled.
- Series 6500 ladders meet applicable OSHA and ANSI standards.
- Cal-OSHA models also available.

**Workmaster™**



# WORKMASTER™

Super Duty Ladder



**PATENTED**  
Pat. # US 9,206,643 B2

WMX05R37A9P3

# Workmaster™ super-duty rolling metal ladders

## FIRST

# 1

### LADDER DIMENSIONS

# THING'S FIRST

HOW TO SELECT THE CORRECT LADDER!



**Working height** is the approximate height that you would like to be able to comfortably reach. It is usually calculated at 5.5' above the ladder's platform height.

**Overall height** is VERY important. You want to be sure that your ladder will not be too tall to fit into your workspace. This includes being able to fit through any doors that you may need to move it through, or under any ceilings or fixtures that you may have.

**Top Step height** is the measurement of the top step from the ground. It's important that this measurement is not too far above or below your desired working height.

**Base length** is the measurement of how long the base of the ladder runs. This is dependent upon the height of the ladder. The taller the ladder, the longer the base.

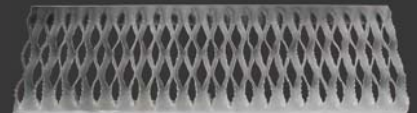
**Base width** is also very important because as ladders get taller, the base width increases. It is important to be sure that the ladder will not be too wide for your workspace.

# 2

### TREAD TYPES



**Perforated (A9)**



**Serrated (A3)**

# 3

### GATE OPTION



**Optional Safety Gate**  
Available on all 4 sides of the platform.

# Super Duty

## Rolling Steel Ladder

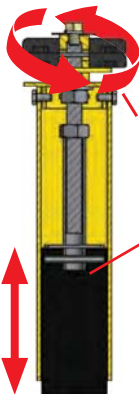
For the workspace that demands the toughest ladder, the Super Duty Workmaster™ ladder.

Every day, work is done where equipment needs to be able to take a beating and keep working. For the toughest jobs, Cotterman® introduces the Super Duty Workmaster™ ladder. Built with extra heavy duty components, the Workmaster™ ladder is resistant to bumps and dings in harsh work environments.

- 1,000 lb. load rating.
- 59° climb angle.
- 1½" diameter x 14 gauge tube construction.
- 24" x 24" platform with optional self-closing gates (available for all 4 sides of platform).
- Adjustable front legs level the ladder.
- Two-tone powder coat finish creates high visibility.
- Standard back peg board.
- Workmaster™ Super Duty ladders meet applicable OSHA and ANSI standards.



Modular Front Leg and SafeLock  
Field Replaceable, Adjustable Front Legs  
that level the Ladder



Easily adjust Rubber Foot Pad to level the ladder or compensate for wear

2" x 2" x 5"  
Adjustable  
Rubber Foot  
Pad



## Workmaster™ Super-Duty Ladder MODEL NUMBERS & MEASUREMENTS

**LOAD RATING**  
**1,000 LBS.**



| DESCRIPTION            | TOP STEP HEIGHT | OVERALL HEIGHT | WORKING HEIGHT (approx.) | SERRATED TREAD |            |             |               | OPEN GRIP TREAD |            |             |               |
|------------------------|-----------------|----------------|--------------------------|----------------|------------|-------------|---------------|-----------------|------------|-------------|---------------|
|                        |                 |                |                          | MODEL NUMBER   | BASE WIDTH | BASE LENGTH | SHP. WT. LBS. | MODEL NUMBER    | BASE WIDTH | BASE LENGTH | SHP. WT. LBS. |
| 5 STEP WITH HANDRAILS  | 50"             | 80"            | 116"                     | WMX05R37A3P3   | 37"        | 56"         | 297           | WMX05R37A9P3    | 37"        | 56"         | 301           |
| 6 STEP WITH HANDRAILS  | 60"             | 90"            | 126"                     | WMX06R37A3P3   | 37"        | 62"         | 314           | WMX06R37A9P3    | 37"        | 62"         | 318           |
| 7 STEP WITH HANDRAILS  | 70"             | 100"           | 136"                     | WMX07R37A3P3   | 37"        | 68"         | 343           | WMX07R37A9P3    | 37"        | 68"         | 347           |
| 8 STEP WITH HANDRAILS  | 80"             | 110"           | 146"                     | WMX08R37A3P3   | 37"        | 74"         | 360           | WMX08R37A9P3    | 37"        | 74"         | 364           |
| 9 STEP WITH HANDRAILS  | 90"             | 120"           | 156"                     | WMX09R37A3P3   | 37"        | 80"         | 380           | WMX09R37A9P3    | 37"        | 80"         | 384           |
| 10 STEP WITH HANDRAILS | 100"            | 130"           | 166"                     | WMX10R37A3P3   | 37"        | 86"         | 397           | WMX10R37A9P3    | 37"        | 86"         | 401           |
| 11 STEP WITH HANDRAILS | 110"            | 140"           | 176"                     | WMX11R42A3P3   | 42"        | 92"         | 423           | WMX11R42A9P3    | 42"        | 92"         | 427           |
| 12 STEP WITH HANDRAILS | 120"            | 150"           | 186"                     | WMX12R42A3P3   | 42"        | 98"         | 440           | WMX12R42A9P3    | 42"        | 98"         | 444           |

# Workmaster™

## aluminum Workmaster™ Super-Duty Ladder

**THE COTTERMAN® ALUMINUM WORKMASTER™** is a lightweight, Super Duty ladder that can be easily moved from job to job. It's sturdy aluminum construction allows for a 500 lb. load rating and can handle the rigors of a rough or tough work environment.

- 1½" diameter x 14 gauge tube construction.
- Adjustable steel front legs level the ladder.
- 24" x 24" platform.
- Workmaster™ Super Duty ladder meet applicable OSHA and ANSI standards.



### Serrated (A3)

Open step serrated surface.  
For rugged applications.

## Aluminum Workmaster™ Super-Duty Ladder

MODEL NUMBERS & MEASUREMENTS



**LOAD RATING  
500 LBS.**

| DESCRIPTION            | TOP STEP HEIGHT | OVERALL HEIGHT | WORKING HEIGHT (approx.) | GRIP STRUT TREAD |            |             | SHP. WT. LBS. |
|------------------------|-----------------|----------------|--------------------------|------------------|------------|-------------|---------------|
|                        |                 |                |                          | MODEL NUMBER     | BASE WIDTH | BASE LENGTH |               |
| 5 STEP WITH HANDRAILS  | 50"             | 80"            | 116"                     | WMXA05R37A3P3    | 37"        | 56"         | 175           |
| 6 STEP WITH HANDRAILS  | 60"             | 90"            | 126"                     | WMXA06R37A3P3    | 37"        | 62"         | 210           |
| 7 STEP WITH HANDRAILS  | 70"             | 100"           | 136"                     | WMXA07R37A3P3    | 37"        | 68"         | 245           |
| 8 STEP WITH HANDRAILS  | 80"             | 110"           | 146"                     | WMXA08R37A3P3    | 37"        | 74"         | 280           |
| 9 STEP WITH HANDRAILS  | 90"             | 120"           | 156"                     | WMXA09R37A3P3    | 37"        | 80"         | 315           |
| 10 STEP WITH HANDRAILS | 100"            | 130"           | 166"                     | WMXA10R37A3P3    | 37"        | 86"         | 350           |
| 11 STEP WITH HANDRAILS | 110"            | 140"           | 176"                     | WMXA11R42A3P3    | 42"        | 92"         | 385           |
| 12 STEP WITH HANDRAILS | 120"            | 150"           | 186"                     | WMXA12R42A3P3    | 42"        | 98"         | 420           |

STOCK 'n STORE™



steel

# Stock 'n Store

Folding Rolling Ladders



SAS3A2  
(RED C6)

**R2C**  
READY TO CLIMB

zero assembly time.



## Folding Rolling Ladders for Office, Retail, and Industrial use, easy-to-store and ready-to-use

**THE COTTERMAN® StockNStore™** This lightweight ladder easily folds into a compact assembly for quick rolling movement and storage. In use, the ladder opens smoothly during the transition from rolling to setting down on rubber feet. The hinges automatically lock in place. For added convenience, the ladder tilts and rolls in the open as well as closed position.

- 350 lb. load rating.
- Available in 2, 3 and 4 step models, all with 16" wide by 7" deep steps and 10" deep top step.
- Easily folded in one simple motion.
- PVC coated aircraft cable release system.
- Rolls in folded form or in setup form.
- Compact and easily stored.
- Gray powder coat finish is standard. Available in a variety of colors.
- Three tread types available.
- 4" casters.
- 30" handrails.
- Ships parcel freight.
- StockNStore™ ladders meet applicable OSHA and ANSI standards.



**FOLDS FLAT FOR COMPACT STORAGE ALMOST ANYWHERE!**



Cable release system for weight activated hinges with no pinch points

### StockNStore™ (steel) MODEL NUMBERS & MEASUREMENTS



**LOAD RATING  
350 LBS.**

| DESCRIPTION           | TREAD        | TOP STEP HEIGHT | OVERALL HEIGHT | WORKING HEIGHT (approx.) | 16" TREAD WIDTH |            |             |               |
|-----------------------|--------------|-----------------|----------------|--------------------------|-----------------|------------|-------------|---------------|
|                       |              |                 |                |                          | MODEL NUMBER    | BASE WIDTH | BASE LENGTH | SHP. WT. LBS. |
| 2 STEP WITH HANDRAILS | PERFORATED   | 20"             | 50"            | 86"                      | SAS2A6          | 21"        | 22"         | 33            |
| 3 STEP WITH HANDRAILS | PERFORATED   | 30"             | 60"            | 96"                      | SAS3A6          | 21"        | 28"         | 40            |
| 4 STEP WITH HANDRAILS | PERFORATED   | 40"             | 70"            | 106"                     | SAS4A6          | 21"        | 34"         | 48            |
| 2 STEP WITH HANDRAILS | RIBBED VINYL | 20"             | 50"            | 86"                      | SAS2A2          | 21"        | 22"         | 37            |
| 3 STEP WITH HANDRAILS | RIBBED VINYL | 30"             | 60"            | 96"                      | SAS3A2          | 21"        | 28"         | 46            |
| 4 STEP WITH HANDRAILS | RIBBED VINYL | 40"             | 70"            | 106"                     | SAS4A2          | 21"        | 34"         | 55            |
| 2 STEP WITH HANDRAILS | SERRATED     | 20"             | 50"            | 86"                      | SAS2A3          | 21"        | 22"         | 35            |
| 3 STEP WITH HANDRAILS | SERRATED     | 30"             | 60"            | 96"                      | SAS3A3          | 21"        | 28"         | 43            |
| 4 STEP WITH HANDRAILS | SERRATED     | 40"             | 70"            | 106"                     | SAS4A3          | 21"        | 34"         | 51            |

# aluminum Stock 'n Store

## Lightweight, Folding Rolling Ladders

**THE COTTERMAN® ALUMINUM StockN'Store™** ladder provides all of the advantages of the steel StockN'Store™, but with lightweight aluminum construction. The Aluminum StockN'Store™ is ideal for tight spaces where quick, easy access and quick, easy storage are required.

- 350 lb. load rating.
- Available in 2, 3 and 4 step models, all with 16" wide by 7" deep steps and 10" deep top step.
- Easily folded in one simple motion.
- PVC coated aircraft cable release system.
- Rolls in folded form or in setup form.
- Compact and easily stored.
- Unpainted, aluminum finish is standard. Available in a variety of colors.
- Three tread types available.
- 4" casters.
- 30" handrails with cross tube.
- Ships parcel freight.
- StockN'Store™ ladders meet applicable OSHA and ANSI standards.



**LOAD RATING  
350 LBS.**

### StockN'Store™ (aluminum) MODEL NUMBERS & MEASUREMENTS

| DESCRIPTION           | TREAD        | TOP STEP HEIGHT | OVERALL HEIGHT | WORKING HEIGHT (approx.) | 16" TREAD WIDTH |            |             |                |
|-----------------------|--------------|-----------------|----------------|--------------------------|-----------------|------------|-------------|----------------|
|                       |              |                 |                |                          | MODEL NUMBER    | BASE WIDTH | BASE LENGTH | SHIP. WT. LBS. |
| 2 STEP WITH HANDRAILS | PERFORATED   | 20"             | 50"            | 86"                      | SASA2A10        | 21"        | 22"         | 17             |
| 3 STEP WITH HANDRAILS | PERFORATED   | 30"             | 60"            | 96"                      | SASA3A10        | 21"        | 28"         | 25             |
| 4 STEP WITH HANDRAILS | PERFORATED   | 40"             | 70"            | 106"                     | SASA4A10        | 21"        | 34"         | 32             |
| 2 STEP WITH HANDRAILS | RIBBED VINYL | 20"             | 50"            | 86"                      | SASA2A2         | 21"        | 22"         | 18             |
| 3 STEP WITH HANDRAILS | RIBBED VINYL | 30"             | 60"            | 96"                      | SASA3A2         | 21"        | 28"         | 26             |
| 4 STEP WITH HANDRAILS | RIBBED VINYL | 40"             | 70"            | 106"                     | SASA4A2         | 21"        | 34"         | 33             |
| 2 STEP WITH HANDRAILS | SERRATED     | 20"             | 50"            | 86"                      | SASA2A3         | 21"        | 22"         | 14             |
| 3 STEP WITH HANDRAILS | SERRATED     | 30"             | 60"            | 96"                      | SASA3A3         | 21"        | 28"         | 21             |
| 4 STEP WITH HANDRAILS | SERRATED     | 40"             | 70"            | 106"                     | SASA4A3         | 21"        | 34"         | 29             |





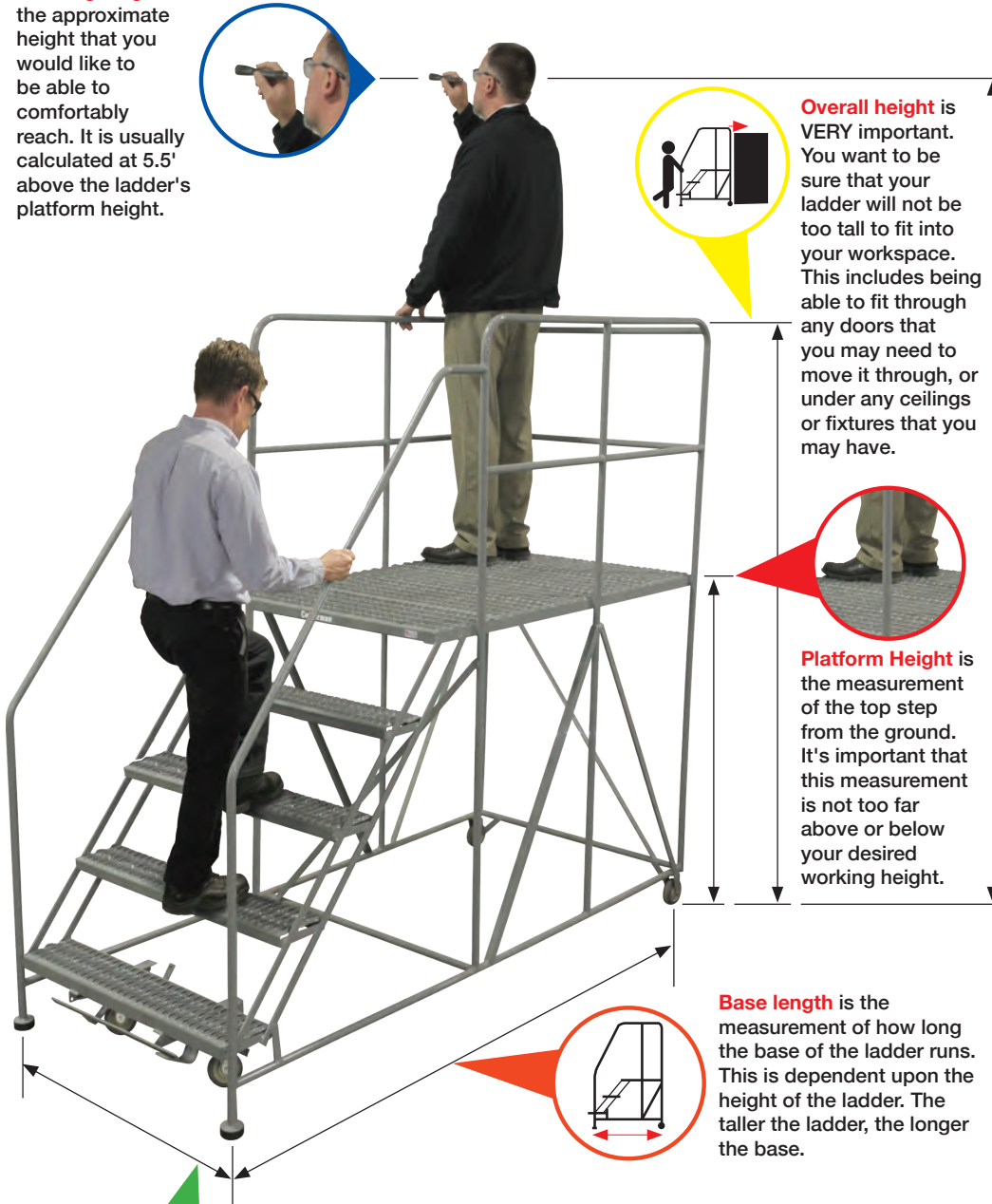
# WORK STANDS / PLATFORMS

## 1 LADDER DIMENSIONS

**Working height** is the approximate height that you would like to be able to comfortably reach. It is usually calculated at 5.5' above the ladder's platform height.

# FIRST THING'S FIRST

"HOW TO SELECT THE CORRECT PLATFORM!"



**Overall height** is VERY important. You want to be sure that your ladder will not be too tall to fit into your workspace. This includes being able to fit through any doors that you may need to move it through, or under any ceilings or fixtures that you may have.

**Platform Height** is the measurement of the top step from the ground. It's important that this measurement is not too far above or below your desired working height.

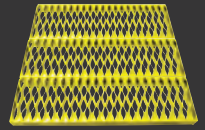
**Base length** is the measurement of how long the base of the ladder runs. This is dependent upon the height of the ladder. The taller the ladder, the longer the base.

**Base width** It is important to be sure that the ladder will not be too wide for your workspace. We offer 2 tread widths to accommodate most work areas.

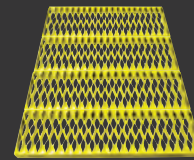
## 2 PLATFORM DEPTH



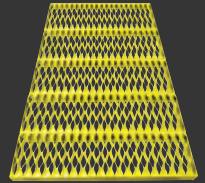
**24" Platform**  
SERIES WP



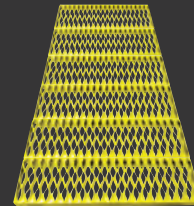
**36" Platform**  
SERIES WP



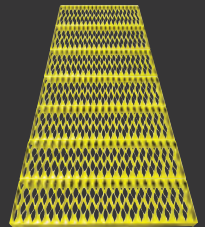
**48" Platform**  
SERIES WP & DWP



**60" Platform**  
SERIES WP & DWP



**72" Platform**  
SERIES WP & DWP



**84" Platform**  
SERIES DWP

## 3 PLATFORM/STEP WIDTH



**24" Step**



**36" Step**

### COLOR OPTIONS

Cotterman® offers a variety of powder-coated colors to suit your needs. Choose from any of the following 11 colors.



WORK STANDS / PLATFORMS



**R2C**<sup>™</sup>  
READY TO CLIMB  
zero assembly time.

welded steel  
**WORK  
PLATFORMS**



6WP3648RA3B4  
(WITH 48" PLATFORM)

# SERIES "WP"

## Heavy Duty, Welded Steel Work Platforms

THE COTTERMAN® SERIES WP Work Platforms have a higher load capacity and larger platform for two people, plus tools.

- 800 lb. load rating.
- 50° climb angle.
- Rests on two 2½" rubber pads.
- Two 4" rigid heavy duty casters on the rear are standard. The optional Cotterman® SafeLock on the step side provides greater mobility.
- Steps and platforms are constructed of heavy duty serrated tread.
- 36" high handrails with midrail are standard on 5 thru 7 step models. 30" handrails optional on 2 thru 4 step models.
- Work Platforms meet applicable OSHA and ANSI standards.
- Special designs are available.
- Cal-OSHA models also available.



3WP2424RA3B4  
(WITH 24" PLATFORM)



7WP2424RA3B4  
(WITH 24" PLATFORM)



3WP2424A3  
(WITH 36" PLATFORM)

## SERIES WP (single access) MODEL NUMBERS & MEASUREMENTS



**LOAD RATING  
800 LBS.**

| HANDRAILS    | NO. OF STEPS | PLATFORM HEIGHT | OVERALL HEIGHT | WORKING HEIGHT (approx.) | STEP WIDTH | BASE WIDTH | 24" PLATFORM DEPTH |             |               | 36" PLATFORM DEPTH |             |               | 48" PLATFORM DEPTH |             |               | 60" PLATFORM DEPTH |             |             | 72" PLATFORM DEPTH |             |               |
|--------------|--------------|-----------------|----------------|--------------------------|------------|------------|--------------------|-------------|---------------|--------------------|-------------|---------------|--------------------|-------------|---------------|--------------------|-------------|-------------|--------------------|-------------|---------------|
|              |              |                 |                |                          |            |            | MODEL NUMBER       | BASE LENGTH | SHP. WT. LBS. | MODEL NUMBER       | BASE LENGTH | SHP. WT. LBS. | MODEL NUMBER       | BASE LENGTH | SHP. WT. LBS. | MODEL NUMBER       | BASE LENGTH | WEIGHT LBS. | MODEL NUMBER       | BASE LENGTH | SHP. WT. LBS. |
|              |              |                 |                |                          |            |            |                    |             |               |                    |             |               |                    |             |               |                    |             |             |                    |             |               |
| NO HANDRAILS | 2 STEP       | 20"             | 20"            | 86"                      | 24"        | 28"        | 2WP2424            | 34"         | 47            | 2WP2436            | 46"         | 60            | 2WP2448            | 58"         | 77            | 2WP2460            | 70"         | 83          | 2WP2472            | 82"         | 94            |
|              | 2 STEP       | 20"             | 20"            | 86"                      | 36"        | 40"        | 2WP3624            | 34"         | 62            | 2WP3636            | 46"         | 80            | 2WP3648            | 58"         | 104           | 2WP3660            | 70"         | 122         | 2WP3672            | 82"         | 142           |
| HANDRAILS    | 3 STEP       | 30"             | 30"            | 96"                      | 24"        | 28"        | 3WP2424            | 43"         | 62            | 3WP2436            | 55"         | 75            | 3WP2448            | 66"         | 94            | 3WP2460            | 78"         | 107         | 3WP2472            | 90"         | 122           |
|              | 3 STEP       | 30"             | 30"            | 96"                      | 36"        | 40"        | 3WP3624            | 43"         | 81            | 3WP3636            | 55"         | 79            | 3WP3648            | 66"         | 125           | 3WP3660            | 78"         | 143         | 3WP3672            | 90"         | 163           |
|              | 4 STEP       | 40"             | 40"            | 106"                     | 24"        | 28"        | 4WP2424            | 51"         | 77            | 4WP2436            | 63"         | 89            | 4WP2448            | 75"         | 112           | 4WP2460            | 86"         | 124         | 4WP2472            | 98"         | 140           |
|              | 4 STEP       | 40"             | 40"            | 106"                     | 36"        | 40"        | 4WP3624            | 51"         | 100           | 4WP3636            | 63"         | 117           | 4WP3648            | 75"         | 146           | 4WP3660            | 86"         | 164         | 4WP3672            | 98"         | 184           |
|              | 5 STEP       | 50"             | 86"            | 116"                     | 24"        | 28"        | 5WP2424R           | 58"         | 106           | 5WP2436R           | 70"         | 121           | 5WP2448R           | 82"         | 152           | 5WP2460R           | 94"         | 165         | 5WP2472R           | 106"        | 178           |
|              | 5 STEP       | 50"             | 86"            | 116"                     | 36"        | 40"        | 5WP3624R           | 58"         | 136           | 5WP3636R           | 70"         | 184           | 5WP3648R           | 82"         | 192           | 5WP3660R           | 94"         | 210         | 5WP3672R           | 106"        | 228           |
|              | 6 STEP       | 60"             | 96"            | 126"                     | 24"        | 28"        | 6WP2424R           | 67"         | 123           | 6WP2436R           | 78"         | 136           | 6WP2448R           | 90"         | 170           | 6WP2460R           | 102"        | 184         | 6WP2472R           | 114"        | 198           |
|              | 6 STEP       | 60"             | 96"            | 126"                     | 36"        | 40"        | 6WP3624R           | 67"         | 155           | 6WP3636R           | 78"         | 173           | 6WP3648R           | 90"         | 213           | 6WP3660R           | 102"        | 233         | 6WP3672R           | 114"        | 253           |
|              | 7 STEP       | 70"             | 106"           | 136"                     | 24"        | 28"        | 7WP2424R           | 75"         | 137           | 7WP2436R           | 87"         | 150           | 7WP2448R           | 99"         | 187           | 7WP2460R           | 110"        | 208         | 7WP2472R           | 122"        | 228           |
|              | 7 STEP       | 70"             | 106"           | 136"                     | 36"        | 40"        | 7WP3624R           | 75"         | 174           | 7WP3636R           | 87"         | 192           | 7WP3648R           | 99"         | 235           | 7WP3660R           | 110"        | 262         | 7WP3672R           | 122"        | 290           |



dual access  
**WORK  
PLATFORMS**



**6DWP3648RA3  
(WITH 48" LONG PLATFORM)**

# SERIES "DWP"

## Heavy Duty, Dual Access Work Platforms

THE COTTERMAN® SERIES DWP Dual Access Work Platforms have a higher load capacity and larger platform for two people with tools plus stairs at each end of the platform.

- 800 lb. load rating.
- 59° climb angle.
- Rests on four 2½" diameter rubber pads.
- Cotterman® SafeLock is provided on both ends for mobility.
- Steps and platforms are constructed of heavy duty serrated tread.
- Gray powder coat finish is standard.
- 36" high handrails with midrail ship knocked-down for field assembly.
- Dual Access Work Platforms meet applicable OSHA and ANSI standards.
- Cal-OSHA models also available.



7DWP2448RA3  
(WITH 48" LONG PLATFORM)



3DWP2448RA3  
(WITH 48" LONG PLATFORM)

## SERIES DWP (dual access) MODEL NUMBERS & MEASUREMENTS



**LOAD**  
**RA**  
**800**

| NO. OF STEPS | PLATFORM HEIGHT | OVERALL HEIGHT | WORKING HEIGHT (approx.) | STEP WIDTH | 48" PLATFORM DEPTH |            |             |              | 60" PLATFORM DEPTH |            |             |              | 72" PLATFORM DEPTH |            |             |              | 84" PLATFORM DEPTH |            |             |              |
|--------------|-----------------|----------------|--------------------------|------------|--------------------|------------|-------------|--------------|--------------------|------------|-------------|--------------|--------------------|------------|-------------|--------------|--------------------|------------|-------------|--------------|
|              |                 |                |                          |            | MODEL NUMBER       | BASE WIDTH | BASE LENGTH | SHP. WT./BS. | MODEL NUMBER       | BASE WIDTH | BASE LENGTH | SHP. WT./BS. | MODEL NUMBER       | BASE WIDTH | BASE LENGTH | SHP. WT./BS. | MODEL NUMBER       | BASE WIDTH | BASE LENGTH | SHP. WT./BS. |
| 3 STEP       | 30"             | 66"            | 96"                      | 24"        | 3DWP2448R          | 28"        | 75"         | 197          | 3DWP2460R          | 28"        | 87"         | 218          | 3DWP2472R          | 28"        | 99"         | 232          | 3DWP2484R          | 28"        | 111"        | 197          |
| 3 STEP       | 30"             | 66"            | 96"                      | 36"        | 3DWP3648R          | 40"        | 75"         | 239          | 3DWP3648R          | 40"        | 87"         | 267          | 3DWP3672R          | 40"        | 99"         | 286          | 3DWP3684R          | 40"        | 111"        | 314          |
| 4 STEP       | 40"             | 76"            | 106"                     | 24"        | 4DWP2448R          | 28"        | 87"         | 217          | 4DWP2460R          | 28"        | 99"         | 244          | 4DWP2472R          | 28"        | 111"        | 247          | 4DWP2484R          | 28"        | 123"        | 279          |
| 4 STEP       | 40"             | 76"            | 106"                     | 36"        | 4DWP3648R          | 40"        | 87"         | 266          | 4DWP3660R          | 40"        | 99"         | 298          | 4DWP3672R          | 40"        | 111"        | 316          | 4DWP3684R          | 40"        | 123"        | 347          |
| 5 STEP       | 50"             | 86"            | 116"                     | 24"        | 5DWP2448R          | 28"        | 99"         | 229          | 5DWP2460R          | 28"        | 111"        | 266          | 5DWP2472R          | 28"        | 123"        | 280          | 5DWP2484R          | 28"        | 135"        | 308          |
| 5 STEP       | 50"             | 86"            | 116"                     | 36"        | 5DWP3648R          | 40"        | 99"         | 297          | 5DWP3660R          | 40"        | 111"        | 330          | 5DWP3672R          | 40"        | 123"        | 349          | 5DWP3684R          | 40"        | 135"        | 383          |
| 6 STEP       | 60"             | 96"            | 126"                     | 24"        | 6DWP2448R          | 28"        | 111"        | 272          | 6DWP2460R          | 28"        | 123"        | 305          | 6DWP2472R          | 28"        | 135"        | 318          | 6DWP2484R          | 28"        | 147"        | 349          |
| 6 STEP       | 60"             | 96"            | 126"                     | 36"        | 6DWP3648R          | 40"        | 111"        | 337          | 6DWP3660R          | 40"        | 123"        | 376          | 6DWP3672R          | 40"        | 135"        | 395          | 6DWP3684R          | 40"        | 147"        | 432          |
| 7 STEP       | 70"             | 106"           | 136"                     | 24"        | 7DWP2448R          | 28"        | 123"        | 298          | 7DWP2460R          | 28"        | 135"        | 330          | 7DWP2472R          | 28"        | 147"        | 344          | 7DWP2484R          | 28"        | 159"        | 377          |
| 7 STEP       | 70"             | 106"           | 136"                     | 36"        | 7DWP3648R          | 40"        | 123"        | 371          | 7DWP3660R          | 40"        | 135"        | 410          | 7DWP3672R          | 40"        | 147"        | 429          | 7DWP3684R          | 40"        | 159"        | 468          |

# adjustable WORK PLATFORMS

Adjusts 5" to 8" or 9" to 14" (1 step), 13" to 21" (2 step) to meet your varying work levels. Adjustable Work Platforms have a higher load capacity and larger platform for two people, plus tools. Available in serrated or solid with ergo-mat tread. Available in Steel, Aluminum or Stainless Steel.



1AWP2424A5-8  
(WITH 20" DEEP TOP STEP)



## SERIES AWP 1-step MODEL NUMBERS & MEASUREMENTS

**LOAD RATING  
800 LBS.**

| ADJUSTABLE PLATFORM HEIGHT | WORKING HEIGHT (approx.) | MODEL NUMBER  | BASE WIDTH | BASE LENGTH | NO. LEGS | SHP. WT. LBS. |
|----------------------------|--------------------------|---------------|------------|-------------|----------|---------------|
| 5" - 8"                    | 71" - 74"                | 1AWP2424A5-8  | 24"        | 24"         | 4        | 25            |
| 5" - 8"                    | 71" - 74"                | 1AWP2436A5-8  | 24"        | 36"         | 4        | 37            |
| 5" - 8"                    | 71" - 74"                | 1AWP2448A5-8  | 24"        | 48"         | 4        | 39            |
| 5" - 8"                    | 71" - 74"                | 1AWP2460A5-8  | 24"        | 60"         | 6        | 51            |
| 5" - 8"                    | 71" - 74"                | 1AWP2472A5-8  | 24"        | 72"         | 6        | 59            |
| 5" - 8"                    | 71" - 74"                | 1AWP2496A5-8  | 24"        | 96"         | 6        | 74            |
| 9" - 14"                   | 75" - 80"                | 1AWP2424A9-14 | 24"        | 24"         | 4        | 29            |
| 9" - 14"                   | 75" - 80"                | 1AWP2436A9-14 | 24"        | 36"         | 4        | 36            |
| 9" - 14"                   | 75" - 80"                | 1AWP2448A9-14 | 24"        | 48"         | 4        | 43            |
| 9" - 14"                   | 75" - 80"                | 1AWP2460A9-14 | 24"        | 60"         | 6        | 58            |
| 9" - 14"                   | 75" - 80"                | 1AWP2472A9-14 | 24"        | 72"         | 6        | 66            |
| 9" - 14"                   | 75" - 80"                | 1AWP2496A9-14 | 24"        | 96"         | 6        | 81            |

## SERIES AWP 2-step MODEL NUMBERS & MEASUREMENTS

**LOAD RATING  
800 LBS.**

| ADJUSTABLE PLATFORM HEIGHT | WORKING HEIGHT (approx.) | MODEL NUMBER   | BASE WIDTH | BASE LENGTH | NO. LEGS | WEIGHT LBS. |
|----------------------------|--------------------------|----------------|------------|-------------|----------|-------------|
| 13" - 21"                  | 79" - 87"                | 2AWP2412A13-21 | 26"        | 23"         | 4        | 60          |
| 13" - 21"                  | 79" - 87"                | 2AWP3612A13-21 | 38"        | 23"         | 4        | 77          |

**EXCLUSIVE ADJUSTING MECHANISM KEEPS THE STEP RISE EQUAL WHEN PLATFORM HEIGHT IS ADJUSTED.**



# OFFICE LADDERS

## FIRST THING'S FIRST

"HOW TO SELECT THE CORRECT LADDER!"

### 1 LADDER DIMENSIONS



**Working height** is the approximate height that you would like to be able to comfortably reach. It is usually calculated at 5.5' above the ladder's platform height.

**Overall height** is VERY important. You want to be sure that your ladder will not be too tall to fit into your workspace. This includes being able to fit through any doors that you may need to move it through, or under any ceilings or fixtures that you may have.

**Top Step height** is the measurement of the top step from the ground. It's important that this measurement is not too far above or below your desired working height.

**Base width** is also very important because as ladders get taller, the base width increases. It is important to be sure that the ladder will not be too wide for your workspace.

**Base length** is the measurement of how long the base of the ladder runs. This is dependent upon the height of the ladder. The taller the ladder, the longer the base.

### 2 HANDRAIL OPTIONS



### COLOR OPTIONS

Cotterman® offers a variety of powder-coated colors to suit your needs. Choose from any of the following 11 colors.



OFFICE LADDERS



MASTER STEP®  
&  
ALUMA STEP®

# OFFICE LADDERS



ST-502  
LEFT HANDRAIL



# steel or aluminum OFFICE LADDERS

Choose the Color...

Choose the Handrail Configuration.

COTTERMAN® OFFICE LADDERS were first introduced to compliment business interiors, but have since expanded for use in retail, warehousing and even manufacturing applications. The tapered step design, retractable casters and large protective cupped feet increase stability.

Steel Office Ladders (Master Step®) load rating is 450 lbs. Aluminum models (Aluma-Step®) have a 300 lbs. load rating. Aluminum alloy construction is available for those applications that require cleanliness, corrosion resistance or non-magnetic use.

One through six step sizes are available with single or double top steps. Left, right or double handrail arrangements and a removable filing shelf are offered for added convenience. Office Ladders are equipped with easy rolling 2" spring casters for quick start and stop mobility. Comfortable climbing steps and platform are covered with ribbed vinyl matting as standard.

Office ladders meet applicable OSHA and ANSI standards.

- 56° climb angle.



## OFFICE LADDERS MODEL NUMBERS & MEASUREMENTS

LOAD RATING - STEEL  
450 LBS.

LOAD RATING - ALUMINUM  
300 LBS.

|                 | NO. OF STEPS    | TOP STEP HEIGHT | WORKING HEIGHT (approx.) | NO HANDRAILS |            |             |                | DOUBLE HANDRAILS |              |            |             | LEFT HANDRAIL  |               |              |            | RIGHT HANDRAIL |                |               |              |            |             |                |               |
|-----------------|-----------------|-----------------|--------------------------|--------------|------------|-------------|----------------|------------------|--------------|------------|-------------|----------------|---------------|--------------|------------|----------------|----------------|---------------|--------------|------------|-------------|----------------|---------------|
|                 |                 |                 |                          | MODEL NUMBER | BASE WIDTH | BASE LENGTH | OVERALL HEIGHT | SHP. WT. LBS.    | MODEL NUMBER | BASE WIDTH | BASE LENGTH | OVERALL HEIGHT | SHP. WT. LBS. | MODEL NUMBER | BASE WIDTH | BASE LENGTH    | OVERALL HEIGHT | SHP. WT. LBS. | MODEL NUMBER | BASE WIDTH | BASE LENGTH | OVERALL HEIGHT | SHP. WT. LBS. |
| <b>STEEL</b>    |                 |                 |                          |              |            |             |                |                  |              |            |             |                |               |              |            |                |                |               |              |            |             |                |               |
| SINGLE TOP STEP | 2 STEP          | 18"             | 84"                      | ST-200       | 22"        | 20"         | 18"            | 26               | ST-201       | 22"        | 20"         | 48"            | 39            | ST-202       | 22"        | 20"            | 48"            | 36            | ST-203       | 22"        | 20"         | 48"            | 36            |
|                 | 3 STEP          | 27"             | 93"                      | ST-300       | 24"        | 27"         | 27"            | 38               | ST-301       | 24"        | 27"         | 57"            | 49            | ST-302       | 24"        | 27"            | 57"            | 46            | ST-303       | 24"        | 27"         | 57"            | 46            |
|                 | 4 STEP          | 36"             | 102"                     | ST-400*      | 25"        | 34"         | 36"            | 48               | ST-401       | 25"        | 34"         | 66"            | 59            | ST-402*      | 25"        | 34"            | 66"            | 55            | ST-403*      | 25"        | 34"         | 66"            | 55            |
|                 | 5 STEP          | 45"             | 111"                     | ST-500*      | 26"        | 40"         | 45"            | 65               | ST-501       | 26"        | 40"         | 75"            | 77            | ST-502*      | 26"        | 40"            | 75"            | 70            | ST-503*      | 26"        | 40"         | 75"            | 70            |
|                 | 6 STEP          | 54"             | 120"                     | -            | -          | -           | -              | -                | ST-601**     | 27"        | 48"         | 84"            | 88            | -            | -          | -              | -              | -             | -            | -          | -           | -              | -             |
|                 | DOUBLE TOP STEP | 1 STEP          | 9"                       | 65"          | ST-120     | 22"         | 19"            | 9"               | 20           | -          | -           | -              | -             | -            | -          | -              | -              | -             | -            | -          | -           | -              | -             |
| 2 STEP          |                 | 18"             | 84"                      | ST-220       | 22"        | 26"         | 18"            | 32               | ST-221       | 22"        | 26"         | 48"            | 45            | ST-222       | 22"        | 26"            | 48"            | 42            | ST-223       | 22"        | 26"         | 48"            | 42            |
| 3 STEP          |                 | 27"             | 93"                      | ST-320       | 24"        | 32"         | 27"            | 43               | ST-321       | 24"        | 32"         | 57"            | 54            | ST-322       | 24"        | 32"            | 57"            | 51            | ST-323       | 24"        | 32"         | 57"            | 51            |
| 4 STEP          |                 | 36"             | 102"                     | ST-420*      | 25"        | 39"         | 36"            | 52               | ST-421       | 25"        | 39"         | 66"            | 64            | ST-422*      | 25"        | 39"            | 66"            | 60            | ST-423*      | 25"        | 39"         | 66"            | 60            |
| 5 STEP          |                 | 45"             | 111"                     | ST-520*      | 26"        | 46"         | 45"            | 68               | ST-521       | 26"        | 46"         | 75"            | 81            | ST-522*      | 26"        | 46"            | 75"            | 77            | ST-523*      | 26"        | 46"         | 75"            | 77            |
| 6 STEP          |                 | 54"             | 120"                     | -            | -          | -           | -              | -                | ST-621**     | 27"        | 53"         | 84"            | 93            | -            | -          | -              | -              | -             | -            | -          | -           | -              | -             |
| <b>ALUMINUM</b> |                 |                 |                          |              |            |             |                |                  |              |            |             |                |               |              |            |                |                |               |              |            |             |                |               |
| SINGLE TOP STEP | 2 STEP          | 18"             | 84"                      | AM-200       | 22"        | 20"         | 18"            | 16               | AM-201       | 22"        | 20"         | 48"            | 23            | AM-202       | 22"        | 20"            | 48"            | 22            | AM-203       | 22"        | 20"         | 48"            | 22            |
|                 | 3 STEP          | 27"             | 93"                      | AM-300       | 24"        | 27"         | 27"            | 23               | AM-301       | 24"        | 27"         | 57"            | 28            | AM-302       | 24"        | 27"            | 57"            | 27            | AM-303       | 24"        | 27"         | 57"            | 27            |
|                 | 4 STEP          | 36"             | 102"                     | AM-400*      | 25"        | 34"         | 36"            | 29               | AM-401       | 25"        | 34"         | 66"            | 33            | AM-402*      | 25"        | 34"            | 66"            | 32            | AM-403*      | 25"        | 34"         | 66"            | 32            |
|                 | 5 STEP          | 45"             | 111"                     | AM-500*      | 26"        | 40"         | 45"            | 40               | AM-501       | 26"        | 40"         | 75"            | 45            | AM-502*      | 26"        | 40"            | 75"            | 44            | AM-503*      | 26"        | 40"         | 75"            | 44            |
|                 | 6 STEP          | 54"             | 120"                     | -            | -          | -           | -              | -                | AM601**      | 27"        | 48"         | 84"            | 51            | -            | -          | -              | -              | -             | -            | -          | -           | -              | -             |
|                 | DOUBLE TOP STEP | 1 STEP          | 9"                       | 65"          | AM-120     | 22"         | 19"            | 9"               | 13           | -          | -           | -              | -             | -            | -          | -              | -              | -             | -            | -          | -           | -              | -             |
| 2 STEP          |                 | 18"             | 84"                      | AM-220       | 22"        | 26"         | 18"            | 20               | AM-221       | 22"        | 26"         | 48"            | 28            | AM-222       | 22"        | 26"            | 48"            | 26            | AM-223       | 22"        | 26"         | 48"            | 26            |
| 3 STEP          |                 | 27"             | 93"                      | AM-320       | 24"        | 32"         | 27"            | 26               | AM-321       | 24"        | 32"         | 57"            | 31            | AM-322       | 24"        | 32"            | 57"            | 29            | AM-323       | 24"        | 32"         | 57"            | 29            |
| 4 STEP          |                 | 36"             | 102"                     | AM-420*      | 25"        | 39"         | 36"            | 31               | AM-421       | 25"        | 39"         | 66"            | 36            | AM-422*      | 25"        | 39"            | 66"            | 34            | AM-423*      | 25"        | 39"         | 66"            | 34            |
| 5 STEP          |                 | 45"             | 111"                     | AM-520*      | 26"        | 46"         | 45"            | 42               | AM-521       | 26"        | 46"         | 75"            | 48            | AM-522*      | 26"        | 46"            | 75"            | 46            | AM-523*      | 26"        | 46"         | 75"            | 46            |
| 6 STEP          |                 | 54"             | 120"                     | -            | -          | -           | -              | -                | AM-621**     | 27"        | 53"         | 84"            | 53            | -            | -          | -              | -              | -             | -            | -          | -           | -              | -             |

\*Must have double handrails for CAL-OSHA.

\*\*Must have 42" guardrails for CAL-OSHA.

# STEP STANDS and STOOLS

**R2C**  
READY TO CLIMB  
zero assembly time.

# STEP STANDS & STOOLS



**1803N32B1  
(ALUMINUM)**

**1403N30B1  
(STEEL)**

**1802N22B1  
(ALUMINUM)**

# steel or aluminum Step Stands & Stools

Convenient and heavy duty, **STEP STANDS** are equipped with non-slip serrated steps. Rubber tipped legs to hold the stand secure during use. A comfortable easy climbing angle of 45 degrees. Steel stands have a gray powder-coat finish and lightweight aluminum stands have a mill finish. Choose from one, two and three step models.

- 500 lb. load rating.
- 45° climb angle.
- Serrated steps.
- 9½" deep steps.
- Without handrails.
- Step Stands & Stools meet applicable OSHA and ANSI standards.



1403N25B1  
(STEEL)



## Step Stands & Stools

**LOAD RATING  
500 LBS.**

| DESCRIPTION      | TREAD    | TOP STEP HEIGHT | OVERALL HEIGHT | WORKING HEIGHT (approx.) | MODEL NUMBER | BASE WIDTH | BASE LENGTH | TREAD WIDTH | SHP. WT. LBS. |
|------------------|----------|-----------------|----------------|--------------------------|--------------|------------|-------------|-------------|---------------|
| <b>STEEL</b>     |          |                 |                |                          |              |            |             |             |               |
| 2 STEP           | SERRATED | 20"             | 20"            | 86"                      | 1302N22B1    | 23"        | 23"         | 20"         | 24            |
| 2 STEP W/CASTERS | SERRATED | 20"             | 20"            | 86"                      | 1302N22B3    | 23"        | 23"         | 20"         | 28            |
| 3 STEP           | SERRATED | 30"             | 30"            | 96"                      | 1403N25B1*   | 26"        | 33"         | 22"         | 42            |
| 3 STEP           | SERRATED | 30"             | 30"            | 96"                      | 1403N30B1*   | 32"        | 33"         | 28"         | 47            |
| <b>ALUMINUM</b>  |          |                 |                |                          |              |            |             |             |               |
| 1 STEP           | SERRATED | 10"             | 10"            | 76"                      | 1801N30B1    | 31"        | 16"         | 28"         | 9             |
| 2 STEP           | SERRATED | 20"             | 20"            | 86"                      | 1802N22B1    | 23"        | 22"         | 20"         | 13            |
| 3 STEP           | SERRATED | 30"             | 30"            | 96"                      | 1903N25B1*   | 26"        | 33"         | 22"         | 25            |
| 3 STEP           | SERRATED | 30"             | 30"            | 96"                      | 1803N32B1    | 33"        | 33"         | 30"         | 23            |

\*SHIPS UNASSEMBLED



1302N22B1  
(STEEL)



1302N22B3  
(STEEL)



1801N30B1  
(ALUMINUM)



1903N25B1  
(ALUMINUM)



**4 Manufacturing Plants  
Saves Fuel.  
Saves Time.  
Saves You Money.**

Bakersfield, CA

Croswell, MI

Atlanta, GA

Arlington, TX



# Our Commitment to the Environment starts with our Commitment to **YOU!**

**Most Cotterman products ship set up, ready to use.**

*We can do this because of our four US plants.*

Our competitors ship flat packed unassembled ladders - a typical flat packed 10 step ladder can have 30 pounds of packaging materials, composed of plastic, corrugated, and pallet lumber.

**We use a one pound recyclable polypropylene bag.**



**Our multiple manufacturing plants reduces the fuel consumption requirements of our logistic providers.**

For example, We estimate that **191,085 lbs.** (95.54 US tons) of carbon were saved by shipping from four manufacturing locations versus just the Croswell, MI location. This equates to an estimated annual savings of **8,514** gallons of diesel fuel.

**In 2016 our company recycling program recycled:**

**266,400 lbs.** of steel, **30,400 lbs.** of cardboard, and **31,800 lbs.** of aluminum.

# Cotterman®



# CROSSOVER BRIDGES

## FIRST THING'S FIRST "HOW TO SELECT THE CORRECT BRIDGE!"

### 1 LADDER DIMENSIONS



**Standing height** is the approximate height that a person would stand while on the bridge. You will want to be sure that the user can stand comfortably on the platform without obstruction. We calculate this at 6 feet. But individual standing height may vary.



**Overall height** is VERY important. You want to be sure that your bridge will not be too tall to fit into your workspace. This includes being able to fit through any doors that you may need to move it through, or under any ceilings or fixtures that you may have.



**Platform height** is the measurement of the top step from the ground. It's important that this measurement is not too far above or below your desired working height.



**Overall length** is the measurement between the floor-mounting brackets. This is dependent upon the height of the bridge. The taller the bridge, the longer the overall length. Lower climb angles also increase overall length.

### 2 PLATFORM DEPTH



**Serrated (A3) Steel & Aluminum Models**  
Open step serrated surface.  
For rugged applications.



**Diamond Plate (A7)**  
Trustworthy grip, ideal for dry, indoor environments.

### COLOR OPTIONS (steel only)

Cotterman® offers a variety of powder-coated colors to suit your needs. Choose from any of the following 11 colors.



# CROSSOVER BRIDGES



# CROSSOVER BRIDGES



**4SCS24A3  
(STEEL)**

steel or aluminum

# Crossover Bridges

Easy, convenient access over obstacles

**COTTERMAN® CROSSOVER BRIDGES** provide safe walkways over a variety of obstacles such as conveyors, machines, and pipes.

- 500 lb. load rating.
- 50° climb angle, with 8" step rise.
- 42" high guardrails.
- Stair sections have 24<sup>1</sup>/<sub>8</sub>" wide x 7" deep steps. The top platform includes a 4" high toe board on each side.
- Legs have floor mounting plate with 5/8" diameter hole.
- Serrated or Diamond Plate steps.
- Ships unassembled.
- Gray powder coat finish is standard on steel models. Aluminum is a brightened, uniform finish.
- Crossover Bridges meet applicable OSHA and ANSI standards.



**6SCA24A3**  
(WITH 24" PLATFORM)



MADE IN U.S.A.

## crossover bridges MODEL NUMBERS & MEASUREMENTS

**LOAD RATING**  
**500 LBS.**

| NO. OF STEPS    | PLATFORM HEIGHT | OVERALL HEIGHT | STANDING HEIGHT (approx.) | STEP WIDTH | BASE WIDTH                       | 24" PLATFORM DEPTH |                |           |                                  |               | 36" PLATFORM DEPTH |                |           |                                  |               |
|-----------------|-----------------|----------------|---------------------------|------------|----------------------------------|--------------------|----------------|-----------|----------------------------------|---------------|--------------------|----------------|-----------|----------------------------------|---------------|
|                 |                 |                |                           |            |                                  | MODEL NUMBER       | OVERALL LENGTH | CLEAR HT. | CLEAR WIDTH                      | SHP. WT. LBS. | MODEL NUMBER       | OVERALL LENGTH | CLEAR HT. | CLEAR WIDTH                      | SHP. WT. LBS. |
| <b>STEEL</b>    |                 |                |                           |            |                                  |                    |                |           |                                  |               |                    |                |           |                                  |               |
| 4 STEP          | 32"             | 74"            | 104"                      | 24"        | 28 <sup>5</sup> / <sub>8</sub> " | 4SCS24A3           | 86"            | 30"       | 24 <sup>7</sup> / <sub>8</sub> " | 328           | 4SCS36A3           | 98"            | 30"       | 36 <sup>5</sup> / <sub>8</sub> " | 359           |
| 5 STEP          | 40"             | 82"            | 112"                      | 24"        | 28 <sup>5</sup> / <sub>8</sub> " | 5SCS24A3           | 99"            | 38"       | 24 <sup>7</sup> / <sub>8</sub> " | 371           | 5SCS36A3           | 111"           | 38"       | 36 <sup>5</sup> / <sub>8</sub> " | 401           |
| 6 STEP          | 48"             | 90"            | 120"                      | 24"        | 28 <sup>5</sup> / <sub>8</sub> " | 6SCS24A3           | 113"           | 46"       | 24 <sup>7</sup> / <sub>8</sub> " | 413           | 6SCS36A3           | 125"           | 46"       | 36 <sup>5</sup> / <sub>8</sub> " | 444           |
| 7 STEP          | 56"             | 98"            | 128"                      | 24"        | 28 <sup>5</sup> / <sub>8</sub> " | 7SCS24A3           | 126"           | 54"       | 24 <sup>7</sup> / <sub>8</sub> " | 456           | 7SCS36A3           | 138"           | 54"       | 36 <sup>5</sup> / <sub>8</sub> " | 486           |
| <b>ALUMINUM</b> |                 |                |                           |            |                                  |                    |                |           |                                  |               |                    |                |           |                                  |               |
| 4 STEP          | 32"             | 74"            | 104"                      | 24"        | 28 <sup>5</sup> / <sub>8</sub> " | 4SCA24A3           | 86"            | 30"       | 24 <sup>7</sup> / <sub>8</sub> " | 158           | 4SCA36A3           | 98"            | 30"       | 36 <sup>5</sup> / <sub>8</sub> " | 170           |
| 5 STEP          | 40"             | 82"            | 112"                      | 24"        | 28 <sup>5</sup> / <sub>8</sub> " | 5SCA24A3           | 99"            | 38"       | 24 <sup>7</sup> / <sub>8</sub> " | 175           | 5SCA36A3           | 111"           | 38"       | 36 <sup>5</sup> / <sub>8</sub> " | 188           |
| 6 STEP          | 48"             | 90"            | 120"                      | 24"        | 28 <sup>5</sup> / <sub>8</sub> " | 6SCA24A3           | 113"           | 46"       | 24 <sup>7</sup> / <sub>8</sub> " | 193           | 6SCA36A3           | 125"           | 46"       | 36 <sup>5</sup> / <sub>8</sub> " | 205           |
| 7 STEP          | 56"             | 98"            | 128"                      | 24"        | 28 <sup>5</sup> / <sub>8</sub> " | 7SCA24A3           | 126"           | 54"       | 24 <sup>7</sup> / <sub>8</sub> " | 210           | 7SCA36A3           | 138"           | 54"       | 36 <sup>5</sup> / <sub>8</sub> " | 222           |

NUMBER OF STEPS IS THE NUMBER OF STEPS ON EACH SIDE, INCLUDING PLATFORM.

# CROSSOVER BRIDGES

# SPACE SAVER Crossover Bridges



**COTTERMAN® SPACE-SAVER CROSSOVER BRIDGES** provide safe access over obstacles in areas with limited space due to a steeper climb angle.

- 500 lb. load rating.
- 70° climb angle, with 8" step rise.
- 42" Handrails, constructed of 1½" diameter round tube.
- Stair sections have 24<sup>1</sup>/<sub>8</sub>" wide x 4<sup>7</sup>/<sub>8</sub>" deep steps. The top platform includes a 4" high toe board on each side.
- Legs have floor mounting plate with 5/8" diameter hole.
- Serrated or Diamond Plate steps.
- Ships unassembled.
- Gray powder coat finish is standard on steel models. Aluminum is a brightened, uniform finish.
- Cal-OSHA requires customers to request a variance for specific application.

**NOTE:** Before erecting Space Saver Crossover Bridge, check federal, state and local codes.

## Space-Saver Crossover Bridges MODEL NUMBERS & MEASUREMENTS

**LOAD RATING  
500 LBS.**

| NO. OF STEPS    | PLATFORM HEIGHT | OVERALL HEIGHT | STANDING HEIGHT (approx.) | STEP WIDTH | BASE WIDTH                        | 24" PLATFORM DEPTH |                |           |                                   | 36" PLATFORM DEPTH |              |                |           |                                   |             |
|-----------------|-----------------|----------------|---------------------------|------------|-----------------------------------|--------------------|----------------|-----------|-----------------------------------|--------------------|--------------|----------------|-----------|-----------------------------------|-------------|
|                 |                 |                |                           |            |                                   | MODEL NUMBER       | OVERALL LENGTH | CLEAR HT. | CLEAR LGTH.                       | WEIGHT LBS.        | MODEL NUMBER | OVERALL LENGTH | CLEAR HT. | CLEAR LGTH.                       | WEIGHT LBS. |
| <b>STEEL</b>    |                 |                |                           |            |                                   |                    |                |           |                                   |                    |              |                |           |                                   |             |
| 4 STEP          | 32"             | 74"            | 104"                      | 24"        | 28 <sup>5</sup> / <sub>16</sub> " | 4SPS24A3           | 55"            | 30"       | 25 <sup>9</sup> / <sub>16</sub> " | 245                | 4SPS36A3     | 67"            | 30"       | 37 <sup>9</sup> / <sub>16</sub> " | 276         |
| 5 STEP          | 40"             | 82"            | 112"                      | 24"        | 28 <sup>5</sup> / <sub>16</sub> " | 5SPS24A3           | 61"            | 38"       | 25 <sup>9</sup> / <sub>16</sub> " | 273                | 5SPS36A3     | 73"            | 38"       | 37 <sup>9</sup> / <sub>16</sub> " | 303         |
| 6 STEP          | 48"             | 90"            | 120"                      | 24"        | 28 <sup>5</sup> / <sub>16</sub> " | 6SPS24A3           | 67"            | 46"       | 25 <sup>9</sup> / <sub>16</sub> " | 300                | 6SPS36A3     | 78"            | 46"       | 37 <sup>9</sup> / <sub>16</sub> " | 330         |
| 7 STEP          | 56"             | 98"            | 128"                      | 24"        | 28 <sup>5</sup> / <sub>16</sub> " | 7SPS24A3           | 73"            | 54"       | 25 <sup>9</sup> / <sub>16</sub> " | 327                | 7SPS36A3     | 84"            | 54"       | 37 <sup>9</sup> / <sub>16</sub> " | 358         |
| <b>ALUMINUM</b> |                 |                |                           |            |                                   |                    |                |           |                                   |                    |              |                |           |                                   |             |
| 4 STEP          | 32"             | 74"            | 104"                      | 24"        | 28 <sup>5</sup> / <sub>16</sub> " | 4SPA24A3           | 55"            | 30"       | 25 <sup>9</sup> / <sub>16</sub> " | 123                | 4SPA36A3     | 67"            | 30"       | 37 <sup>9</sup> / <sub>16</sub> " | 135         |
| 5 STEP          | 40"             | 82"            | 112"                      | 24"        | 28 <sup>5</sup> / <sub>16</sub> " | 5SPA24A3           | 61"            | 38"       | 25 <sup>9</sup> / <sub>16</sub> " | 133                | 5SPA36A3     | 73"            | 38"       | 37 <sup>9</sup> / <sub>16</sub> " | 145         |
| 6 STEP          | 48"             | 90"            | 120"                      | 24"        | 28 <sup>5</sup> / <sub>16</sub> " | 6SPA24A3           | 67"            | 46"       | 25 <sup>9</sup> / <sub>16</sub> " | 143                | 6SPA36A3     | 78"            | 46"       | 37 <sup>9</sup> / <sub>16</sub> " | 155         |
| 7 STEP          | 56"             | 98"            | 128"                      | 24"        | 28 <sup>5</sup> / <sub>16</sub> " | 7SPA24A3           | 73"            | 54"       | 25 <sup>9</sup> / <sub>16</sub> " | 153                | 7SPA36A3     | 84"            | 54"       | 37 <sup>9</sup> / <sub>16</sub> " | 165         |





# SPECIALTY PRODUCTS

## SERIES 4000 Supported Cantilever Ladders

- Framework is 1" O.D. steel tubing. Base is 2"x2"x¼" steel angle. Can be folded for shipping or storing.
- Steps are 24"Wx7"D. Top step is 24"Wx10"D (20" Deep Top Step available).
- Horizontal distance from rear of base to vertical support is 32" (8-12 step), 20" (6 step), and 14" (5 step).
- 4" rigid casters on rear, 4" swivel casters with SafeLock on front, and 2½" diameter rubber pads on legs.
- Series 4000 ladders meet applicable OSHA and ANSI standards.

### SERIES 4000 MODEL NUMBERS & MEASUREMENTS

**LOAD RATING  
300 LBS.**



| DESCRIPTION | TOP STEP HEIGHT | OVERALL HEIGHT | WORKING HEIGHT (approx.) | 24" TREAD WIDTH |            |             | WEIGHT LBS. |
|-------------|-----------------|----------------|--------------------------|-----------------|------------|-------------|-------------|
|             |                 |                |                          | MODEL NUMBER    | BASE WIDTH | BASE LENGTH |             |
| 5 STEP      | 50"             | 80"            | 116"                     | 4005R2632       | 32"        | 41"         | 151         |
| 6 STEP      | 60"             | 90"            | 126"                     | 4006R2632       | 32"        | 47"         | 174         |
| 7 STEP      | 70"             | 100"           | 136"                     | 4007R2632       | 32"        | 53"         | 192         |
| 8 STEP      | 80"             | 110"           | 146"                     | 4008R2632       | 32"        | 59"         | 212         |
| 9 STEP      | 90"             | 120"           | 156"                     | 4009R2632       | 32"        | 66"         | 230         |
| 10 STEP     | 100"            | 130"           | 166"                     | 4010R2632       | 32"        | 73"         | 253         |
| 11 STEP     | 110"            | 140"           | 176"                     | 4011R2632       | 32"        | 79"         | 272         |
| 12 STEP     | 120"            | 162"           | 186"                     | 4012R2632       | 32"        | 85"         | 393         |



4009R2632A1



5006R2630A6

## series 5000 Stock and Order Picking Ladders

COTTERMAN® SERIES 5000 all-welded steel stock-picking safety ladders offer the advantages of a rugged one-piece welded ladder with the versatility of a stock-picking truck.

- Available in 6 different heights, each ladder has two (6-7 step) or three (8-11 step) 24"x 24" heavy gauge steel shelves, plus a 24"Wx20"D top step with 10" folding platform workshelf.
- 500 lb. combined load rating (300 lbs. for ladder) & (200 lbs. for shelving).
- Series 5000 ladders meet applicable OSHA and ANSI standards.
- Cal-OSHA models also available.

### SERIES 5000 MODEL NUMBERS & MEASUREMENTS



| DESCRIPTION | TOP STEP HEIGHT | OVERALL HEIGHT | WORKING HEIGHT (approx.) | 24" TREAD WIDTH |            |             | WEIGHT LBS. |
|-------------|-----------------|----------------|--------------------------|-----------------|------------|-------------|-------------|
|             |                 |                |                          | MODEL NUMBER    | BASE WIDTH | BASE LENGTH |             |
| 6 STEP      | 60"             | 90"            | 126"                     | 5006R2630       | 30"        | 56"         | 195         |
| 7 STEP      | 70"             | 100"           | 136"                     | 5007R2630       | 30"        | 63"         | 226         |
| 8 STEP      | 80"             | 110"           | 146"                     | 5008R2632       | 32"        | 68"         | 231         |
| 9 STEP      | 90"             | 120"           | 156"                     | 5009R2632       | 32"        | 75"         | 247         |
| 10 STEP     | 100"            | 130"           | 166"                     | 5010R2632       | 32"        | 83"         | 259         |
| 11 STEP     | 110"            | 140"           | 176"                     | 5011R2632       | 32"        | 88"         | 281         |

**LOAD RATING  
500 LBS.**  
**300 LBS.  
LADDER**  
**200 LBS.  
SHELVING**

# SERIES "PC"

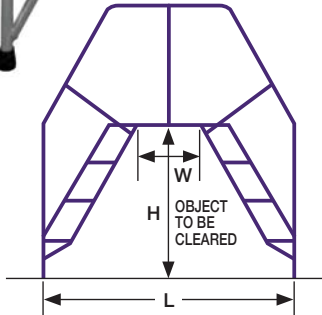
## Portable Crossover Ladders

Portable steel crossovers are easily moved from place to place.

- 350 lb. load rating.
- 50° climb angle.
- 1" diameter steel tubing with 24" wide treads.
- Rugged one-piece welded-steel construction.
- Rubber tips on all four legs.
- Series PC ladders meet applicable OSHA and ANSI standards.



6PC36A3  
(WITH 36" PLATFORM)



## SERIES PC MODEL NUMBERS & MEASUREMENTS



| NO. STEPS INCLUDING PLATFORM | TOP STEP HEIGHT | OVERALL HEIGHT | WORKING HEIGHT (approx.) | 24" TREAD WIDTH |            |                 |                  |                 |             |
|------------------------------|-----------------|----------------|--------------------------|-----------------|------------|-----------------|------------------|-----------------|-------------|
|                              |                 |                |                          | MODEL NUMBER    | BASE WIDTH | BASE LENGTH (L) | CLEAR HEIGHT (H) | CLEAR WIDTH (W) | WEIGHT LBS. |
| 3 STEP / 24" PLATFORM        | 30"             | 60"            | 96"                      | 3PC24           | 30"        | 58"             | 28"              | 10"             | 111         |
| 3 STEP / 36" PLATFORM        | 30"             | 60"            | 96"                      | 3PC36           | 30"        | 69"             | 28"              | 22"             | 123         |
| 3 STEP / 48" PLATFORM        | 30"             | 60"            | 96"                      | 3PC48           | 30"        | 82"             | 28"              | 32"             | 156         |
| 4 STEP / 24" PLATFORM        | 40"             | 70"            | 106"                     | 4PC24           | 30"        | 76"             | 38"              | 10"             | 157         |
| 4 STEP / 36" PLATFORM        | 40"             | 70"            | 106"                     | 4PC36           | 30"        | 87"             | 38"              | 22"             | 170         |
| 4 STEP / 48" PLATFORM        | 40"             | 70"            | 106"                     | 4PC48           | 30"        | 100"            | 38"              | 32"             | 207         |
| 5 STEP / 24" PLATFORM        | 50"             | 80"            | 116"                     | 5PC24           | 30"        | 93"             | 48"              | 10"             | 172         |
| 5 STEP / 36" PLATFORM        | 50"             | 80"            | 116"                     | 5PC36           | 30"        | 104"            | 48"              | 22"             | 210         |
| 5 STEP / 48" PLATFORM        | 50"             | 80"            | 116"                     | 5PC48           | 30"        | 116"            | 48"              | 32"             | 240         |
| 5 STEP / 60" PLATFORM        | 50"             | 80"            | 116"                     | 5PC60           | 30"        | 128"            | 48"              | 46"             | 273         |
| 6 STEP / 24" PLATFORM        | 60"             | 90"            | 126"                     | 6PC24           | 30"        | 110"            | 58"              | 10"             | 225         |
| 6 STEP / 36" PLATFORM        | 60"             | 90"            | 126"                     | 6PC36           | 30"        | 121"            | 58"              | 22"             | 237         |
| 6 STEP / 48" PLATFORM        | 60"             | 90"            | 126"                     | 6PC48           | 30"        | 134"            | 58"              | 32"             | 274         |
| 6 STEP / 60" PLATFORM        | 60"             | 90"            | 126"                     | 6PC60           | 30"        | 146"            | 58"              | 46"             | 307         |



# FOLD UP STEP

- 350-lb. load rating.
- Gray Powder-coated finish.

Mount easily and allow a quick step up. Easily fold into a vertical position when not in use. Includes two 9/16" mounting holes. Fasteners not included.

## Fold Up Step MODEL NUMBERS & MEASUREMENTS

**LOAD RATING**  
**350 LBS.**



| DESCRIPTION                             | MATERIAL | MODEL NO. |
|---|----------|-----------|
| MANUAL FOLD-UP STEP, 15" L, 4" H        | STEEL    | FUS-100   |
| SPRING-LOADED FOLD-UP STEP, 15" L, 4" H | STEEL    | FUS-101   |



## Welded Steel DOCK LADDERS

One-piece welded assemblies that provide safe access to docks and mezzanines. Walk-thru models have 42" high handrails. Side step models have step rungs plus 4 additional hand rungs.

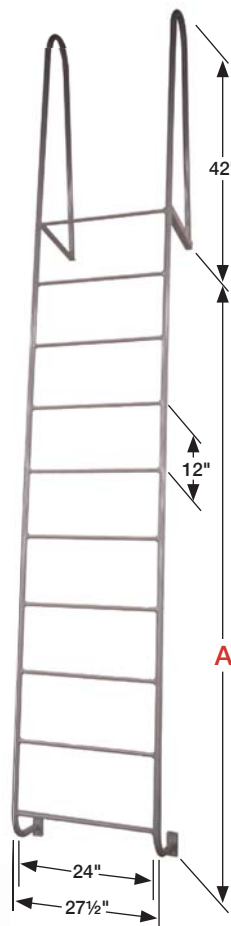
- Constructed of 1 1/4" tube with 3/4" non-slip solid round rungs.
- 18" wide steps on side step models and 24" on walk-thru models, spaced on 12" centers.
- Walk-thru models have flat supports for easy mounting.
- Gray powder coat is standard finish.
- Meet applicable OSHA and ANSI standards.

## Storage Tank Access Ladders

Ladder tops hook to the top edge of a tank to allow user portable access to the inside of storage tanks and vessels. They are constructed of welded steel with durable gray powder-coat paint finish and rubber-tipped legs.

- 300-lb. load rating

| MODEL NUMBER | NO. STEP RUNGS | LENGTH | WIDTH | SHP. WT. LBS. |
|--------------|----------------|--------|-------|---------------|
| STO6AL       | 6              | 73     | 16"   | 29            |
| STO7AL       | 7              | 85     | 16"   | 33            |
| STO8AL       | 8              | 97     | 16"   | 37            |
| STO9AL       | 9              | 109    | 16"   | 40            |
| STO10AL      | 10             | 121    | 16"   | 45            |
| STO11AL      | 11             | 133    | 16"   | 49            |
| STO12AL      | 12             | 145    | 16"   | 53            |
| STO13AL      | 13             | 157    | 16"   | 57            |
| STO14AL      | 14             | 169    | 16"   | 61            |
| STO15AL      | 15             | 181    | 16"   | 65            |



## Walk-Thru Dock Ladders

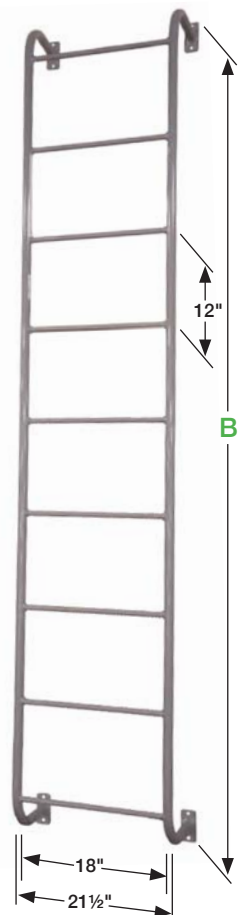
### MODEL NUMBERS & MEASUREMENTS

| MODEL NUMBER | NO. STEP RUNGS | DIM. A | WEIGHT LBS. | LOAD RATING 300 LBS. |
|--------------|----------------|--------|-------------|----------------------|
| D2WT         | 2              | 1'6"   | 34          | MADE IN U.S.A.       |
| D3WT         | 3              | 2'6"   | 39          |                      |
| D4WT         | 4              | 3'6"   | 45          |                      |
| D5WT         | 5              | 4'6"   | 50          |                      |
| D6WT         | 6              | 5'6"   | 55          |                      |
| D7WT         | 7              | 6'6"   | 61          |                      |
| D8WT         | 8              | 7'6"   | 66          |                      |
| D9WT         | 9              | 8'6"   | 71          |                      |
| D10WT        | 10             | 9'6"   | 77          |                      |

## Side-Step Dock Ladders

### MODEL NUMBERS & MEASUREMENTS

| MODEL NUMBER | NO. STEP RUNGS | TOTAL RUNGS | DIM. B | WEIGHT LBS. |
|--------------|----------------|-------------|--------|-------------|
| D2SS         | 2              | 6           | 6'     | 33          |
| D3SS         | 3              | 7           | 7'     | 38          |
| D4SS         | 4              | 8           | 8'     | 42          |
| D5SS         | 5              | 9           | 9'     | 47          |
| D6SS         | 6              | 10          | 10'    | 51          |
| D7SS         | 7              | 11          | 11'    | 56          |
| D8SS         | 8              | 12          | 12'    | 61          |
| D9SS         | 9              | 13          | 13'    | 65          |
| D10SS        | 10             | 14          | 14'    | 70          |



# WORKMASTER®


## Overhead Work Platforms for forklift trucks

Boost the efficiency and versatility of your forklift trucks with the Overhead Work Platforms from Cotterman®. Quick access to overhead maintenance jobs, construction and repairs, stock selection or just simple light bulb replacement.

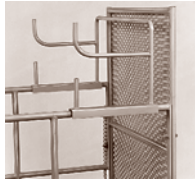
- 66" H back guard.
- 42" railing ht.
- 1 1/4" steel tube railing.
- 3 3/4"x7 1/2" tine sleeve.
- 4" toeboard.
- Meet applicable OSHA and ANSI standards.



### Workmaster® MODEL NUMBERS & MEASUREMENTS

| MODEL NO. | PLATFORM SIZE | TINE SLEEVE SPACING | WEIGHT LBS. | LOAD RATING<br><b>1000 LBS.</b>  |
|-----------|---------------|---------------------|-------------|--|
| WM-100    | 36"Wx48"D     | 26" c/c             | 204         | <br><b>MADE IN U.S.A.</b> |
| WM-101    | 48"Wx36"D     | 30" c/c             | 194         |  |
| WM-103    | 36"Wx36"D     | 26" c/c             | 173         |  |
| WM-104    | 48"Wx48"D     | 30" c/c             | 309         |  |

## WORKMASTER® options



### HORIZONTAL TUBE CADDY

Option HT: This horizontal caddy slides onto the side rails of the platform and stores 4' and 8' fluorescent tubes. Dual level tray keeps old and new tubes separated.



### VERTICAL TUBE CADDY

Option VT: Attaches to the side of the platform and holds a box of 4' or 8' fluorescent tubes. Conserves valuable platform space for tool or supply storage.



### OVERHEAD GUARD

Option OG: Attachable overhead guard can be used to help protect workers from falling objects. The overall height of the guard is 80" from the platform deck to the top of the guard.



### OPTIONAL CASTERS

Option SC: These easy roll 4" casters bolt directly to the bottom of tine sleeves.



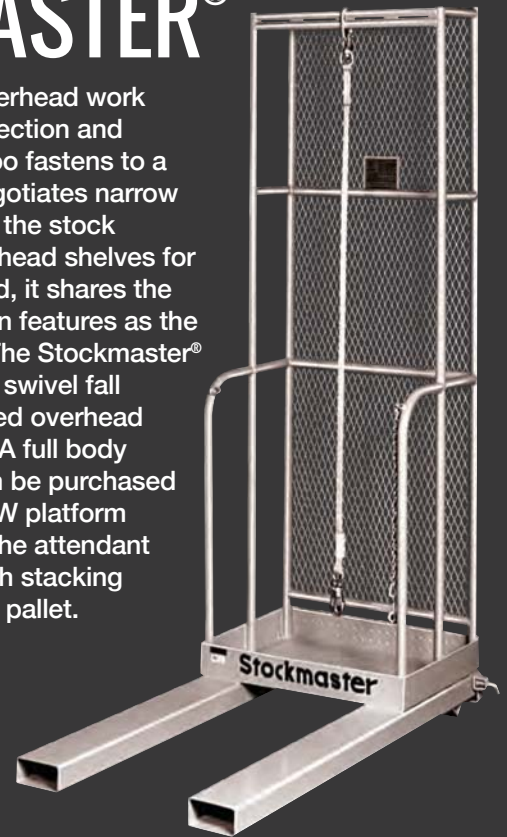
### SLIDING TOOL TRAY

Option TT: This handy workshelf secures to the side rails of the platform. It keeps tools within reach without restricting platform space.

# STOCKMASTER®

This companion to the overhead work platform will aid in the selection and inventorying of stock. It too fastens to a standard lift truck and negotiates narrow aisles. Stockmaster® gets the stock handler and pallet to overhead shelves for loading and unloading and, it shares the same durable construction features as the standard work platform. The Stockmaster® is now equipped with a 6' swivel fall protection lanyard mounted overhead to an 84" tall back guard. A full body harness for personnel can be purchased separately. The 20"Dx30"W platform with a 4" toeboard gives the attendant room to stand with enough stacking space to handle 42" deep pallet.

- 84" H back guard
- 2 1/2"x5 1/2" tine sleeve
- 42" railing ht.
- 4" toeboard
- 1 1/4" steel tube railing



### stockmaster® MODEL NUMBERS & MEASUREMENTS

| MODEL NO. | PLATFORM SIZE | TINE SLEEVE SPACING | WEIGHT LBS. | LOAD RATING<br><b>1000 LBS.</b> |
|-----------|---------------|---------------------|-------------|---------------------------------|
| SM-301    | 30"Wx20"D     | 42"                 | 223         |                                 |

**The Maxi Lift®**



# THE MAXI-LIFT®

## Personnel Lifts

THE COTTERMAN® MAXI LIFT® line of push-around lifts are designed for overhead maintenance tasks. We offer two electro-hydraulic lifts, one with a 25' platform height that uses outriggers and one at a 17' height that has no outriggers, for a smaller footprint while in use. The winch model has a 15' platform height and is not powered, so it's easy to maintain and use.



ML-15W

# THE MAXI-LIFT® Elevated Work Platform



## MANUAL WINCH Elevating Work Platform

An economical alternative to electro-hydraulic lifts, the Cotterman® Manual Winch lift is simple to use and maintain. The lift is quickly elevated to the desired working height with a hand winch, then the user climbs a ladder to the platform. Built-in safety features include a friction brake on the winch and outriggers that can be placed in an X-pattern or rectangular.

**LOAD RATING  
300 LBS.**

### MODEL NUMBERS & MEASUREMENTS

| MODEL NO. | RETRACTED HEIGHT | PLATFORM HEIGHT | OVERALL HEIGHT | WORKING HEIGHT (approx.) | GUARDRAIL HEIGHT | BASE WIDTH | BASE LENGTH | FOOT PRINT 90° | FOOT PRINT 45° | SHP. WT. LBS. |
|-----------|------------------|-----------------|----------------|--------------------------|------------------|------------|-------------|----------------|----------------|---------------|
| ML-15W    | 79"              | 15'             | 18.5'          | 20.5'                    | 42"              | 29"        | 59"         | 63"x 57"       | 66"x 72"       | 820           |



## 17 ft. Outrigger-less ELECTRO-HYDRAULIC Push-Around Lift

The outrigger-less Maxi Lift® has a heavier base to provide stability without the use of outriggers, providing a narrow footprint while in use. Lift is ready to use by activating two floor locks in the front of the base.

- 12v DC power.
- 110 AC outlet in platform.
- Up/Down controls in platform and base.
- Key operated control panel.
- Emergency Stop button at platform and base.
- Sliding midrail for platform entry/exit.
- 8" solid phenolic casters.
- Fits through standard 30" doorway.

### MODEL NUMBERS & MEASUREMENTS

**LOAD RATING  
400 LBS.**

| MODEL NO. | RETRACTED HEIGHT | PLATFORM HEIGHT | OVERALL HEIGHT | WORKING HEIGHT (approx.) | GUARDRAIL HEIGHT | BASE WIDTH | BASE LENGTH | SHP. WT. LBS. |
|-----------|------------------|-----------------|----------------|--------------------------|------------------|------------|-------------|---------------|
| MLN176BH  | 77.5"            | 17.5'           | 20.5'          | 22.5'                    | 42"              | 30"        | 58"         | 1217          |

## 25 ft. ELECTRO-HYDRAULIC Push-Around Lift

The ML256BH is our high-reaching model, designed to work comfortably at 30.5 feet. At this height, outriggers are required.

- 12v DC power.
- 110 AC outlet in platform.
- Up/Down controls in platform and base.
- Key operated control panel.
- Emergency Stop button at platform and base.
- Sliding midrail for platform entry/exit.
- 8" solid phenolic casters.
- Fits through standard 30" doorway.

### MODEL NUMBERS & MEASUREMENTS

**LOAD RATING  
300 LBS.**

| MODEL NO. | RETRACTED HEIGHT | PLATFORM HEIGHT | OVERALL HEIGHT | WORKING HEIGHT (approx.) | GUARDRAIL HEIGHT | BASE WIDTH | BASE LENGTH | OUTRIGGER FOOTPRINT | SHP. WT. LBS. |
|-----------|------------------|-----------------|----------------|--------------------------|------------------|------------|-------------|---------------------|---------------|
| ML256BH   | 77.5"            | 25.5'           | 28.5'          | 30.5'                    | 42"              | 30"        | 63"         | 54" X 63"           | 1214          |



SELF-CLOSING SAFETY GATES

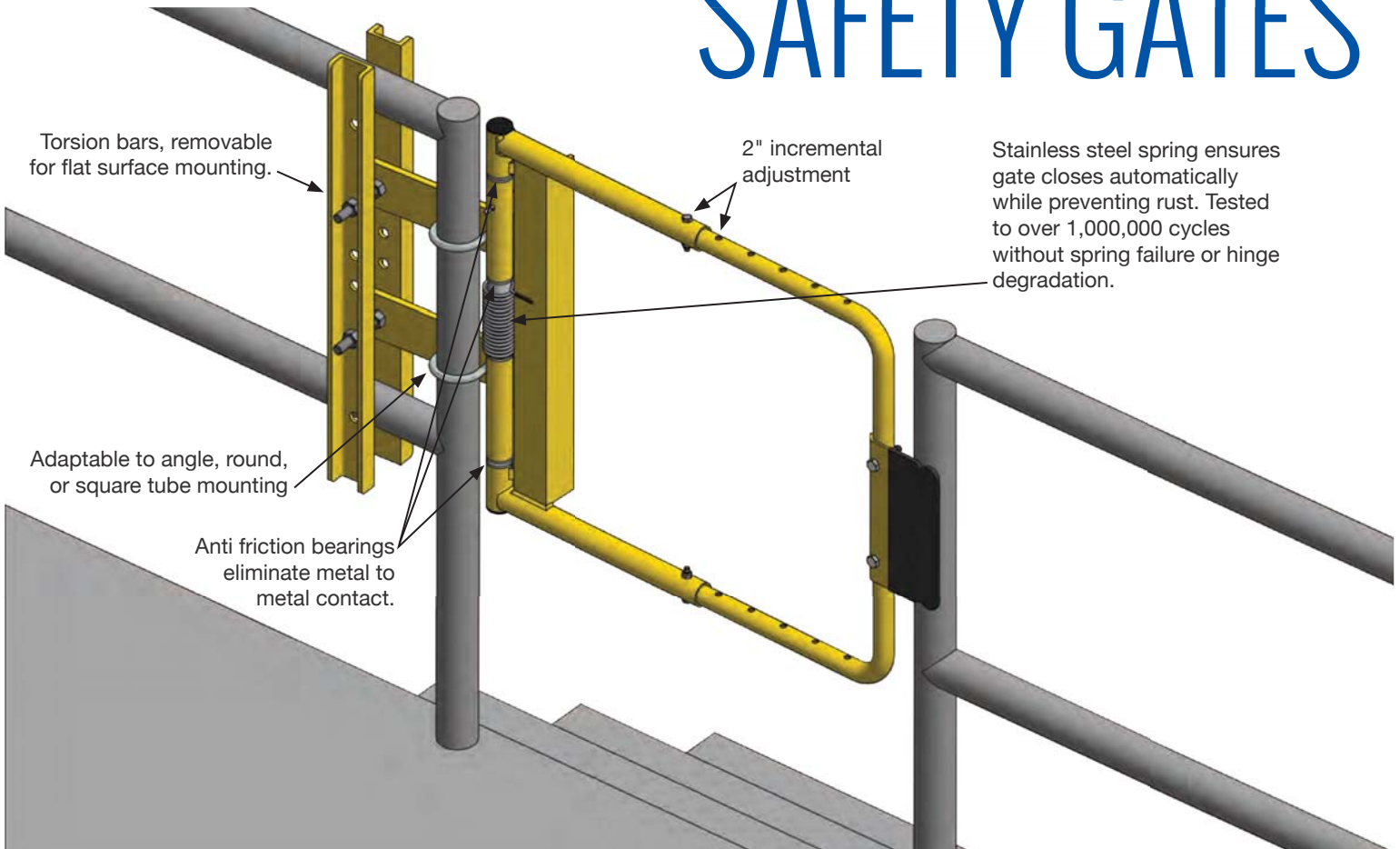


adjustable  
self-closing

# SAFETY GATES

Protects Personnel  
from Accidentally Falling  
Through Openings

# adjustable self-closing SAFETY GATES



**COTTERMAN® ADJUSTABLE SELF-CLOSING GATES** can be used as barriers to prevent unintended egress through guardrail openings in accordance with OSHA and ANSI standards.

Any guardrail system with a personnel opening can be protected to OSHA standard with one of the two Cotterman® Adjustable Self-Closing Safety Gates. Cotterman® Adjustable Self-Closing Safety Gates meet all applicable ANSI and OSHA standards.

- Versatile, can be mounted to round rail, square rail, angular rail of up to 2", or a firm reinforced wall surface.
- Stainless steel spring closes the gate after each pass thru.
- Gate width is available in two adjustable size ranges: to fit openings of 16" to 26" or 24" to 40". Gate width is adjustable in 2" increments.
- Available in safety yellow or gray powder coated finish with zinc rich powder coat primer for corrosion resistance, or stainless steel construction.



Tested to over 1,000,000 cycles without spring failure or hinge degradation. Stainless Steel spring ensures gate closes automatically while preventing rust.

Anti-friction bearings provide smooth operation and long life, eliminating metal to metal contact



## SAFETY GATES MODEL NUMBERS & MEASUREMENTS

| MODEL NO.    | FITS CLEAR OPENING | FINISH                         |
|--------------|--------------------|--------------------------------|
| AG1626ZC1P1S | 16" - 26"          | Gray powder top coat*          |
| AG2440ZC1P1S | 24" - 40"          | Gray powder top coat*          |
| AG1626ZC2P1S | 16" - 26"          | Safety yellow powder top coat* |
| AG2440ZC2P1S | 24" - 40"          | Safety yellow powder top coat* |
| AG1626SP1S   | 16" - 26"          | Stainless Steel                |
| AG2440SP1S   | 24" - 40"          | Stainless Steel                |

\*zinc rich powder-coat primer





ALUMINUM RAILINGS

bolt-on

# ALUMINUM RAILINGS





# bolt-on ALUMINUM RAILINGS

- Aluminum one-piece welded construction.
- 1½" diameter tube.
- 42" high with mid-rail.
- Corrosion resistant.
- Non-magnetic.
- Brightened uniform finish.
- Mounting feet have 9/16" diameter holes for bolt-on field installation.
- Mounting hardware not included.
- Available in choices of 7 lengths, 2' through 8'.
- Choose a combination of models for distances greater than 8'.
- Aluminum Railings meet applicable OSHA standards.

## BOLT-ON ALUMINUM RAILINGS

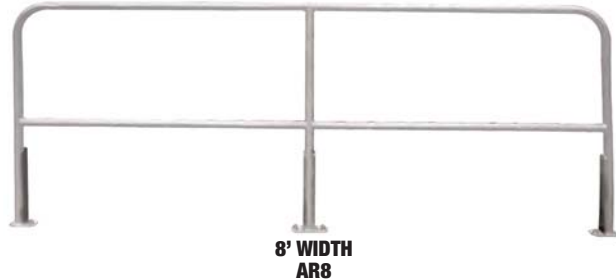
### MODEL NUMBERS & MEASUREMENTS

#### WITHOUT TOE-BOARDS

| MODEL NO. | RAILING LENGTH |
|-----------|----------------|
| AR2       | 2'             |
| AR3       | 3'             |
| AR4       | 4'             |
| AR5       | 5'             |
| AR6       | 6'             |
| AR7       | 7'             |
| AR8       | 8'             |

#### WITH TOE-BOARDS

| MODEL NO. | RAILING LENGTH |
|-----------|----------------|
| AR2T      | 2'             |
| AR3T      | 3'             |
| AR4T      | 4'             |
| AR5T      | 5'             |
| AR6T      | 6'             |
| AR7T      | 7'             |
| AR8T      | 8'             |



FIXED LADDERS

# FIXED LADDERS



## Fixed Steel Ladders

# SERIES "F" & SERIES "M"

**COTTERMAN® FIXED STEEL LADDERS** are designed for use where safe, solid vertical climbing access is required. Series F and Series M modular fixed steel ladders are available with and without walk-thru handrails at the top landing surface. Standard fixed and walk-thru models can be used up to 24' without safety cages. OSHA requires safety cages on ladder heights exceeding 24'. Separate cages are offered for updating older ladders to current safety standards. All Cotterman® fixed ladders meet applicable OSHA and ANSI standards.

**SERIES F FIXED LADDERS:** Ladders are heavy duty welded assemblies

**SERIES M MODULAR FIXED LADDERS:** Ladders are heavy duty sub-assemblies, no section is greater than 7' in length.

### CONSTRUCTION FEATURES:

- Side members are 1/4"x2"x2" steel angle. Climbing rungs are 3/4" corrugated steel round rungs space on 12" centers. Stand-off brackets are 7".

**FIXED LADDER WITH WALK-THRU HANDRAILS:** Ladders are designed for applications where safe landing access is required. They are one-piece welded assemblies for use in applications less than 20' in vertical height.

### CONSTRUCTION FEATURES:

- Side members are 1/4"x2"x2" steel angle. 3/4" corrugated steel round climbing rungs on 12" centers. Stand-off mounting brackets are 7".
- Walk-thru handrails extend 42" above landing surface. Mounting brackets included.
- Welded one-piece.

**FIXED LADDERS WITH SAFETY CAGES:** Standard fixed steel ladders are combined with safety cage protection. Available in 10' through 29' sizes and ideal for hatch-way or side-step landing access.

### CAGE FEATURES:

- Cages have flared bottom opening for easy entry.
- Left or right side step access cage designs are available at no charge.
- Cage begins 7' from bottom of ladder.

**FIXED LADDER WITH WALK-THRU HANDRAILS AND SAFETY CAGES:** Designed for safe landing access and available from 10' to 29'. Cages and walk-thru handrails extend 42" above landing surface.

### CAGE FEATURES:

- Cages have flared bottom opening for easy entry.
- Cage begins 7' from bottom of ladder.

**All: gray powder coat finish, yellow also available.**



14 Rung  
Standard  
**F14S**

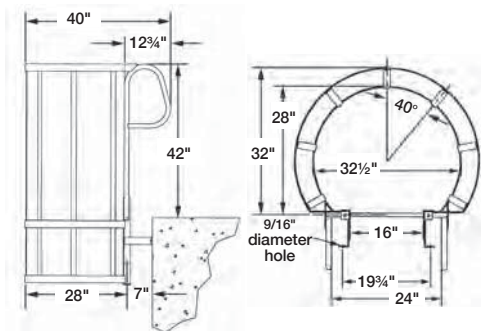
14 Rung  
with Cage  
**F14SC**



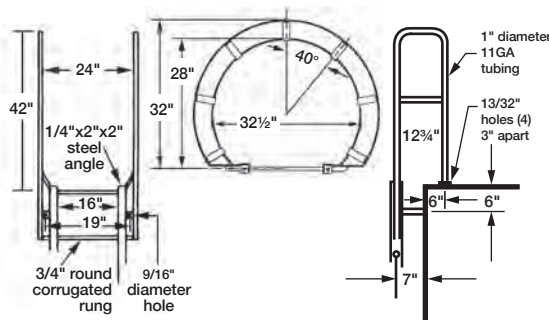
11 Rung  
with Walk-Thru  
**F11W**

11 Rung  
with Walk-Thru  
& Cage: **F11WC**

## Series "M" modular fixed ladder construction



## Series "F" construction features



# FIXED LADDERS

## Fixed Ladders - SERIES F & SERIES M MODEL NUMBERS & MEASUREMENTS



| LENGTH-TOP TO BOTTOM RUNG | NO. RUNGS | STANDARD                |                      | WITH CAGE               |                         |                      | OVERALL LENGTH | WALK THRU-RAIL          |                         |                      | WITH WALK THRU & CAGE   |                         |                      | OVERALL LENGTH |
|---------------------------|-----------|-------------------------|----------------------|-------------------------|-------------------------|----------------------|----------------|-------------------------|-------------------------|----------------------|-------------------------|-------------------------|----------------------|----------------|
|                           |           | SERIES "F" MODEL NUMBER | SHIPPING WEIGHT LBS. | SERIES "F" MODEL NUMBER | SERIES "M" MODEL NUMBER | SHIPPING WEIGHT LBS. |                | SERIES "F" MODEL NUMBER | SERIES "M" MODEL NUMBER | SHIPPING WEIGHT LBS. | SERIES "F" MODEL NUMBER | SERIES "M" MODEL NUMBER | SHIPPING WEIGHT LBS. |                |
| 3'                        | 4         | F4S                     | 35                   |                         |                         |                      | 3'3"           | F4W                     | M4W                     | 61                   |                         |                         |                      | 6'8"           |
| 4'                        | 5         | F5S                     | 43                   |                         |                         |                      | 4'3"           | F5W                     | M5W                     | 70                   |                         |                         |                      | 7'8"           |
| 5'                        | 6         | F6S                     | 52                   |                         |                         |                      | 5'3"           | F6W                     | M6W                     | 78                   |                         |                         |                      | 8'8"           |
| 6'                        | 7         | F7S                     | 60                   |                         |                         |                      | 6'3"           | F7W                     | M7W                     | 87                   |                         |                         |                      | 9'8"           |
| 7'                        | 8         | F8S                     | 66                   |                         |                         |                      | 7'3"           | F8W                     | M8W                     | 95                   | F8WC                    | -                       | 167                  | 10'8"          |
| 8'                        | 9         | F9S                     | 77                   |                         |                         |                      | 8'3"           | F9W                     | M9W                     | 104                  | F9WC                    | -                       | 194                  | 11'8"          |
| 9'                        | 10        | F10S                    | 88                   |                         |                         |                      | 9'3"           | F10W                    | M10W                    | 115                  | F10WC                   | -                       | 211                  | 12'8"          |
| 10'                       | 11        | F11S                    | 96                   | F11SC                   | M11SC                   | 156                  | 10'3"          | F11W                    | M11W                    | 123                  | F11WC                   | M11WC                   | 226                  | 13'8"          |
| 11'                       | 12        | F12S                    | 105                  | F12SC                   | M12SC                   | 182                  | 11'3"          | F12W                    | M12W                    | 132                  | F12WC                   | M12WC                   | 242                  | 14'8"          |
| 12'                       | 13        | F13S                    | 113                  | F13SC                   | M13SC                   | 197                  | 12'3"          | F13W                    | M13W                    | 140                  | F13WC                   | M13WC                   | 268                  | 15'8"          |
| 13'                       | 14        | F14S                    | 122                  | F14SC                   | M14SC                   | 213                  | 13'3"          | F14W                    | M14W                    | 148                  | F14WC                   | M14WC                   | 284                  | 16'8"          |
| 14'                       | 15        | F15S                    | 130                  | F15SC                   | M15SC                   | 268                  | 14'3"          | F15W                    | M15W                    | 157                  | F15WC                   | M15WC                   | 327                  | 17'8"          |
| 15'                       | 16        | F16S                    | 139                  | F16SC                   | M16SC                   | 282                  | 15'3"          | F16W                    | M16W                    | 165                  | F16WC                   | M16WC                   | 353                  | 18'8"          |
| 16'                       | 17        | F17S                    | 150                  | F17SC                   | M17SC                   | 298                  | 16'3"          | F17W                    | M17W                    | 176                  | F17WC                   | M17WC                   | 369                  | 19'8"          |
| 17'                       | 18        | F18S                    | 158                  | F18SC                   | M18SC                   | 316                  | 17'3"          | F18W                    | M18W                    | 185                  | F18WC                   | M18WC                   | 384                  | 20'8"          |
| 18'                       | 19        | F19S                    | 167                  | F19SC                   | M19SC                   | 342                  | 18'3"          | F19W                    | M19W                    | 193                  | F19WC                   | M19WC                   | 401                  | 21'8"          |
| 19'                       | 20        | F20S                    | 175                  | F20SC                   | M20SC                   | 357                  | 19'3"          | F20W                    | M20W                    | 202                  | F20WC                   | M20WC                   | 428                  | 22'8"          |
| 20'                       | 21        |                         |                      | F21SC                   | M21SC                   | 373                  | 20'3"          |                         |                         | -                    | F21WC                   | M21WC                   | 443                  | 23'8"          |
| 21'                       | 22        |                         |                      | F22SC                   | M22SC                   | 388                  | 21'3"          |                         |                         | -                    | F22WC                   | M22WC                   | 458                  | 24'8"          |
| 22'                       | 23        |                         |                      | F23SC                   | M23SC                   | 414                  | 22'3"          |                         |                         | -                    | F23WC                   | M23WC                   | 485                  | 25'8"          |
| 23'                       | 24        |                         |                      | F24SC                   | M24SC                   | 429                  | 23'3"          |                         |                         | -                    | F24WC                   | M24WC                   | 500                  | 26'8"          |
| 24'                       | 25        |                         |                      | F25SC                   | M25SC                   | 444                  | 24'3"          |                         |                         | -                    | F25WC                   | M25WC                   | 515                  | 27'8"          |
| 25'                       | 26        |                         |                      | F26SC                   | M26SC                   | 471                  | 25'3"          |                         |                         | -                    | F26WC                   | M26WC                   | 571                  | 28'8"          |
| 26'                       | 27        |                         |                      | F27SC                   | M27SC                   | 486                  | 26'3"          |                         |                         | -                    | F27WC                   | M27WC                   | 586                  | 29'8"          |
| 27'                       | 28        |                         |                      | F28SC                   | M28SC                   | 501                  | 27'3"          |                         |                         | -                    | F28WC                   | M28WC                   | 601                  | 30'8"          |
| 28'                       | 29        |                         |                      | F29SC                   | M29SC                   | 559                  | 28'3"          |                         |                         | -                    | F29WC                   | M29WC                   | 619                  | 31'8"          |
| 29'                       | 30        |                         |                      | F30SC                   | M30SC                   | 575                  | 29'3"          |                         |                         | -                    | F30WC                   | M30WC                   | 634                  | 32'8"          |

SHIPPING NOTE: All 15 thru 28 rung Series "F" models with cages ship in 2 sections. All 29 and 30 rung models ship in 3 sections.

Hot Dip Galvanized finish or Stainless Steel construction can be quoted.

SHIPPING NOTE: All 15 thru 25 rung Series "F" models with cages and walk thru handrails ship in 2 sections. All 26 and 30 rung models ship in 3 sections.

## ACCESSORIES

Cotterman® fixed steel ladder accessories are designed to provide an additional measure of safety or security for any fixed steel ladder.



### SP Standoff Landing Platform

Standoff landing platforms used with offset caged ladders. These rugged, pre-engineered platforms are constructed with left or right entries as required.

Right Side entry shown

A minimum of 11" diameter surface required for mounting.

OPTION SP shipping weight 153 lbs.



### CG Security Cage Entry Gate

The cage security gate is designed to prevent unauthorized entry into the bottom of the ladder cage. Doors have lockable hasp.

OPTION CG shipping weight 31 lbs.



### LG Security Ladder Guard

The ladder guard is mounted directly over the ladder climbing rungs to prevent unauthorized use. It is available in either 6' or 8' lengths. The guard has a one-piece piano hinge, and is furnished with lock-open and lock-closed hasps.

OPTION LG-6 shipping weight 130 lbs.

OPTION LG-8 shipping weight 148 lbs.

# SERIES "C"

## Welded Steel Cages

**COTTERMAN® SERIES "C"** welded steel cages are one-piece welded assemblies designed for attachment to existing fixed ladders up to 20" wide. A wide range of standard lengths is offered with custom sizes available. To determine the proper length, the cage should begin 7' to 8' from the floor and extend 42" above the landing surface (except for roof hatches).

- Series "C" cages meet applicable OSHA and ANSI standards.
- Standard cage lengths are available from 7'6" to 27'6".
- Cages are crated for shipping protection.
- Wider bottom flare openings are provided for easy entry.
- One-piece all welded steel with gray powder coat finish.
- Hot dip galvanized finish or stainless steel construction can be quoted.



## SERIES "C"

### MODEL NUMBERS & MEASUREMENTS

| LENGTH | MODEL NUMBER | SHIPPING WEIGHT LBS. |
|--------|--------------|----------------------|
| 7'6"   | <b>C075</b>  | 229                  |
| 8'6"   | <b>C085</b>  | 255                  |
| 9'6"   | <b>C095</b>  | 291                  |
| 10'6"  | <b>C105</b>  | 316                  |
| 11'6"  | <b>C115</b>  | 340                  |
| 12'6"  | <b>C125</b>  | 365                  |
| 13'6"  | <b>C135</b>  | 401                  |
| 14'6"  | <b>C145</b>  | 426                  |
| 15'6"  | <b>C155</b>  | 451                  |
| 16'6"  | <b>C165</b>  | 476                  |
| 17'6"  | <b>C175</b>  | 512                  |
| 18'6"  | <b>C185</b>  | 536                  |
| 19'6"  | <b>C195</b>  | 561                  |
| 20'6"  | <b>C205</b>  | 586                  |
| 21'6"  | <b>C215</b>  | 622                  |
| 22'6"  | <b>C225</b>  | 646                  |
| 23'6"  | <b>C235</b>  | 671                  |
| 24'6"  | <b>C245</b>  | 696                  |
| 25'6"  | <b>C255</b>  | 732                  |
| 26'6"  | <b>C265</b>  | 756                  |
| 27'6"  | <b>C275</b>  | 781                  |

## Welded Steel BOLT-ON MODULAR SAFETY CAGES

Gray powder-coated paint finish Modular cages help make existing fixed ladder OSHA compliant. Cages mount to the side rails of fixed ladders up to 20" wide. Top and middle sections have a 29" inside diameter; bottom section flares to a 34" inside diameter for easy entry. Include mounting hardware for flat or angle side rails.

To determine proper length, the cage should begin 7 ft. to 8 ft. from the floor and extend 42" above the landing surface (except for roof hatches). 1 top or middle section and 1 bottom section is required for a complete assembly. Meet applicable OSHA and ANSI standards.



| MODEL NUMBER | DESCRIPTION                       |
|--------------|-----------------------------------|
| <b>2MS</b>   | 2' mid section, bolt on           |
| <b>2BC</b>   | 2' bottom section, bolt on        |
| <b>3MS</b>   | 3' mid section, bolt on           |
| <b>3BC</b>   | 3' bottom section, bolt on        |
| <b>4MC</b>   | 4' mid section, bolt on           |
| <b>4BC</b>   | 4' bottom section, bolt on        |
| <b>5WC</b>   | 5' top section walk-thru, bolt on |
| <b>7MC</b>   | 7' mid section, bolt on           |



- Pickled & Oiled structural steel, for improved finish.
- Bolt-together design allows for easy field assembly.

flexible, versatile and easy-to-assemble design with a superior corrosion-resistant finish

**COMING SOON!**  
NEW FULLY MODULAR FIXED LADDER SYSTEM

TRACK LADDERS



# TRACK LADDERS



# DUAL TRAK™

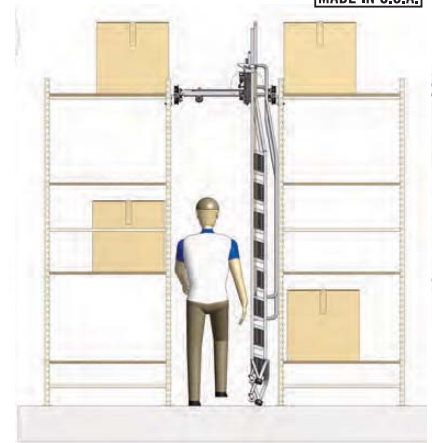
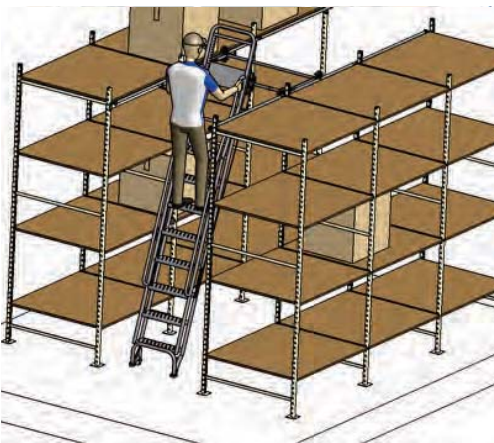
## Ladder System

THE DUAL TRAK™ LADDER is designed to provide safe, convenient access to tall shelving on both sides of narrow aisles in storage areas. A 33% increase in vertical storage space is typically achieved.

The key to the Dual Trak™ Ladder is the overhead carriage on which the ladder is mounted. This heavy duty carriage is mounted on dual tracks attached to shelving on both sides of the aisle. The carriage and ladder assembly rolls smoothly on these tracks along the length of the storeroom aisle. Swivel casters on the bottom of the ladder assist in this easy movement and the ladder sets firmly on rubber pad legs while in use. Additionally, the brake ladder rolls from side to side across the aisle on a track mounted on the carriage. This permits easy access to stock on each side and walk-by clearance. A handrail extends above the ladder for use while standing on the upper steps.

### To select a dual trak™ mounted ladder

1. Calculate the distance from the floor to the desired track mounting surface which should be no more than 4 feet below the top of the highest merchandise to be reached.
2. Track Kit required for each side of the aisle. (4 ends per aisle and 4' maximum center bracket spacing.)
3. Aisle widths must be identified before ordering correct ladder. Dual Trak™ ladders can be used in aisles from 35" to 61" wide.



## Dual Trak™ Ladder System MODEL NUMBERS & MEASUREMENTS

**LOAD RATING  
300 LBS.**

| NO. OF STEPS   | TOP STEP HEIGHT | TRACK MOUNTING RANGE | WORKING HEIGHT (approx.) | STEP WIDTH | ABRASIVE TREAD |            |             | PERFORATED TREAD |            |             |
|--|-----------------|----------------------|--------------------------|------------|----------------|------------|-------------|------------------|------------|-------------|
|  |                 |                      |                          |            | MODEL NUMBER   | BASE WIDTH | WEIGHT LBS. | MODEL NUMBER     | BASE WIDTH | WEIGHT LBS. |
| <b>STATIONARY PIVOTING DUAL TRAK™ LADDER FOR AISLES 35" TO 48" WIDE</b>    |                 |                      |                          |            |                |            |             |                  |            |             |
| 6 STEP   | 60"             | Over 85" to 95"      | 126"                     | 18"        | 7406-A5-S      | 20"        | 79          | 7406-A6-S        | 20"        | 81          |
| 7 STEP   | 70"             | Over 95" to 105"     | 136"                     | 18"        | 7407-A5-S      | 20"        | 84          | 7407-A6-S        | 20"        | 85          |
| 8 STEP   | 80"             | Over 105" to 115"    | 146"                     | 18"        | 7408-A5-S      | 20"        | 89          | 7408-A6-S        | 20"        | 92          |
| 9 STEP   | 90"             | Over 115" to 125"    | 156"                     | 18"        | 7409-A5-S      | 20"        | 98          | 7409-A6-S        | 20"        | 100         |
| 10 STEP  | 100"            | Over 125" to 135"    | 166"                     | 18"        | 7410-A5-S      | 20"        | 104         | 7410-A6-S        | 20"        | 107         |
| 11 STEP  | 110"            | Over 135" to 145"    | 176"                     | 18"        | 7411-A5-S      | 20"        | 108         | 7411-A6-S        | 20"        | 112         |
| 12 STEP  | 120"            | Over 145" to 155"    | 186"                     | 18"        | 7412-A5-S      | 20"        | 115         | 7412-A6-S        | 20"        | 118         |
| <b>LATERAL BRAKE PIVOTING DUAL TRAK™ LADDER FOR AISLES 49" TO 61" WIDE</b> |                 |                      |                          |            |                |            |             |                  |            |             |
| 6 STEP   | 60"             | Over 85" to 95"      | 126"                     | 18"        | 7406-A5-B      | 20"        | 79          | 7406-A6-B        | 20"        | 81          |
| 7 STEP   | 70"             | Over 95" to 105"     | 136"                     | 18"        | 7407-A5-B      | 20"        | 84          | 7407-A6-B        | 20"        | 85          |
| 8 STEP   | 80"             | Over 105" to 115"    | 146"                     | 18"        | 7408-A5-B      | 20"        | 89          | 7408-A6-B        | 20"        | 92          |
| 9 STEP   | 90"             | Over 115" to 125"    | 156"                     | 18"        | 7409-A5-B      | 20"        | 98          | 7409-A6-B        | 20"        | 100         |
| 10 STEP  | 100"            | Over 125" to 135"    | 166"                     | 18"        | 7410-A5-B      | 20"        | 104         | 7410-A6-B        | 20"        | 107         |
| 11 STEP  | 110"            | Over 135" to 145"    | 176"                     | 18"        | 7411-A5-B      | 20"        | 108         | 7411-A6-B        | 20"        | 112         |
| 12 STEP  | 120"            | Over 145" to 155"    | 186"                     | 18"        | 7412-A5-B      | 20"        | 115         | 7412-A6-B        | 20"        | 118         |

Please contact Cotterman® Customer Service for complete details of Track and Mounting Options.

# SINGLE TRAK™

## Ladder System

THE SINGLE TRAK™, mounted shelf ladder is designed to provide easy access to shelves in narrow aisle and cramped storage areas. These ladders have a smooth rolling upper track fixture mounted on straight track at the front shelf edge. 5" wheels with weight actuated brakes allow easy movement of the ladder along the entire length of the track. The rugged all welded steel construction features 5" deep by 14" wide solid steps with abrasive treads.

### To select a single trak™ mounted ladder

1. From the chart below select the proper model based on top step height required for your application. Keep in mind the maximum working height is approximately 5½ feet above the top step height shown.
2. Based on the model selected, specify the required track height from the floor to the top of the track (in 1" incr.). Stay within ranges shown.

| NO. OF STEPS | TOP STEP HEIGHT | TRACK MOUNTING RANGE | WORKING HEIGHT (approx.) | STEP WIDTH | ABRASIVE TREAD |            |             | LOAD RATING<br>300 LBS. |
|--------------|-----------------|----------------------|--------------------------|------------|----------------|------------|-------------|-------------------------|
|              |                 |                      |                          |            | MODEL NUMBER   | BASE WIDTH | WEIGHT LBS. |                         |
| 5 STEP       | 50"             | 85" to 95"           | 116"                     | 14"        | 7180-5-A       | 16"        | 47          |                         |
| 6 STEP       | 60"             | 95" to 105"          | 126"                     | 14"        | 7180-6-A       | 16"        | 51          |                         |
| 7 STEP       | 70"             | 105" to 115"         | 136"                     | 14"        | 7180-7-A       | 16"        | 56          |                         |
| 8 STEP       | 80"             | 115" to 125"         | 146"                     | 14"        | 7180-8-A       | 16"        | 60          |                         |
| 9 STEP       | 90"             | 125" to 135"         | 156"                     | 14"        | 7180-9-A       | 16"        | 64          |                         |
| 10 STEP      | 100"            | 135" to 145"         | 166"                     | 14"        | 7180-10-A      | 16"        | 69          |                         |
| 11 STEP      | 110"            | 145" to 155"         | 176"                     | 14"        | 7180-11-A      | 16"        | 75          |                         |

## Single Trak™ Ladder System

MODEL NUMBERS & MEASUREMENTS



# CUSTOM SOLUTIONS



If you need it...

## WE CAN BUILD IT!

Do you have a specialized application? Cotterman® offers custom solutions for whatever needs you may have. Professionals from all over the world have called upon Cotterman® to quote, design and build custom ladders and work platforms. Whether the job calls for a large, heavy-duty application or something extra small and lightweight, our Cotterman® Customs Team can assist you from quote, to concept, to completion. Every custom ladder or work platform that we create is extensively and meticulously engineered to suit every need of the customer while never compromising quality or safety standards. So, if you are looking to increase productivity, by providing better access to hard-to-reach areas, look no further... call a Cotterman® Custom Solutions team member today to get started!

- Our project consultants and engineers will work together, and with you to create the most effective solution to your needs.
- All Cotterman® Custom Solutions built with the same highest quality standards as all of our products.



# Trailer Access Platform

Easy access to trailers and cube vans

**THE TRAILER ACCESS LADDER** offers easy entry to tractor trailers and cube vans in places where loading docks and bays are not available or convenient. The ladder can be moved easily on two (2) 10" solid rubber rear wheels and is provided with slip resistant heavy duty serrated treads.

- 800 lb. load rating.
- 50° climb angle.
- Steps and platform are constructed of heavy-duty non-slip serrated tread, supported by 1" O.D. tubular frame.
- Handrails with removable snap hook chains.
- Platform size is 24"x24". Step width is 24".
- Two heavy-duty 10" solid rubber rear wheels with large 2½" rubber pads on front legs.
- Gray powder coat finish is standard.
- Trailer access platforms meet applicable OSHA and ANSI standards.
- Cal-OSHA models also available.



5TAP  
SAFETY YELLOW (C2)



4TAP

6TAP



## Trailer Access Platform

**LOAD RATING  
800 LBS.**

### MODEL NUMBERS & MEASUREMENTS

| DESCRIPTION           | TOP STEP HEIGHT | OVERALL HEIGHT | WORKING HEIGHT (approx.) | 24" TREAD WIDTH |            |             |               |
|-----------------------|-----------------|----------------|--------------------------|-----------------|------------|-------------|---------------|
|                       |                 |                |                          | MODEL NUMBER    | BASE WIDTH | BASE LENGTH | SHR. WT. LBS. |
| 3 STEP WITH HANDRAILS | 30"             | 60"            | 96"                      | 3TAP2424RA3     | 32"        | 48"         | 86            |
| 4 STEP WITH HANDRAILS | 40"             | 70"            | 106"                     | 4TAP2424RA3     | 32"        | 55"         | 101           |
| 5 STEP WITH HANDRAILS | 50"             | 86"            | 116"                     | 5TAP2424RA3     | 32"        | 63"         | 119           |
| 6 STEP WITH HANDRAILS | 60"             | 96"            | 126"                     | 6TAP2424RA3     | 32"        | 72"         | 136           |
| 7 STEP WITH HANDRAILS | 70"             | 106"           | 136"                     | 7TAP2424RA3     | 32"        | 80"         | 151           |

# SERIES "WP"

## Heavy Duty, Welded Steel Work Platforms

THE COTTERMAN® SERIES WP Work Platforms have a higher load capacity and larger platform for two people, plus tools.

- 800 lb. load rating.
- 50° climb angle.
- Rests on two 2½" rubber pads.
- Two 4" rigid heavy duty casters on the rear are standard. The optional Cotterman® SafeLock on the step side provides greater mobility.
- Steps and platforms are constructed of heavy duty serrated tread.
- 36" high handrails with midrail are standard on 5 thru 7 step models. 30" handrails optional on 2 thru 4 step models.
- Work Platforms meet applicable OSHA and ANSI standards.
- Special designs are available.
- Cal-OSHA models also available.



3WP2424RA3B4  
(WITH 24" PLATFORM)



7WP2424RA3B4  
(WITH 24" PLATFORM)



3WP2424A3  
(WITH 36" PLATFORM)

## SERIES WP (single access) MODEL NUMBERS & MEASUREMENTS



**LOAD RATING  
800 LBS.**

|              | NO. OF STEPS | PLATFORM HEIGHT | OVERALL HEIGHT | WORKING HEIGHT (approx.) | STEP WIDTH | BASE WIDTH | 24" PLATFORM DEPTH |             |               | 36" PLATFORM DEPTH |             |               | 48" PLATFORM DEPTH |             |               | 60" PLATFORM DEPTH |             |             | 72" PLATFORM DEPTH |             |               |
|--------------|--------------|-----------------|----------------|--------------------------|------------|------------|--------------------|-------------|---------------|--------------------|-------------|---------------|--------------------|-------------|---------------|--------------------|-------------|-------------|--------------------|-------------|---------------|
|              |              |                 |                |                          |            |            | MODEL NUMBER       | BASE LENGTH | SHP. WT. LBS. | MODEL NUMBER       | BASE LENGTH | SHP. WT. LBS. | MODEL NUMBER       | BASE LENGTH | SHP. WT. LBS. | MODEL NUMBER       | BASE LENGTH | WEIGHT LBS. | MODEL NUMBER       | BASE LENGTH | SHP. WT. LBS. |
|              |              |                 |                |                          |            |            |                    |             |               |                    |             |               |                    |             |               |                    |             |             |                    |             |               |
| NO HANDRAILS | 2 STEP       | 20"             | 20"            | 86"                      | 24"        | 28"        | 2WP2424            | 34"         | 47            | 2WP2436            | 46"         | 60            | 2WP2448            | 58"         | 77            | 2WP2460            | 70"         | 83          | 2WP2472            | 82"         | 94            |
|              | 2 STEP       | 20"             | 20"            | 86"                      | 36"        | 40"        | 2WP3624            | 34"         | 62            | 2WP3636            | 46"         | 80            | 2WP3648            | 58"         | 104           | 2WP3660            | 70"         | 122         | 2WP3672            | 82"         | 142           |
|              | 3 STEP       | 30"             | 30"            | 96"                      | 24"        | 28"        | 3WP2424            | 43"         | 62            | 3WP2436            | 55"         | 75            | 3WP2448            | 66"         | 94            | 3WP2460            | 78"         | 107         | 3WP2472            | 90"         | 122           |
|              | 3 STEP       | 30"             | 30"            | 96"                      | 36"        | 40"        | 3WP3624            | 43"         | 81            | 3WP3636            | 55"         | 79            | 3WP3648            | 66"         | 125           | 3WP3660            | 78"         | 143         | 3WP3672            | 90"         | 163           |
|              | 4 STEP       | 40"             | 40"            | 106"                     | 24"        | 28"        | 4WP2424            | 51"         | 77            | 4WP2436            | 63"         | 89            | 4WP2448            | 75"         | 112           | 4WP2460            | 86"         | 124         | 4WP2472            | 98"         | 140           |
|              | 4 STEP       | 40"             | 40"            | 106"                     | 36"        | 40"        | 4WP3624            | 51"         | 100           | 4WP3636            | 63"         | 117           | 4WP3648            | 75"         | 146           | 4WP3660            | 86"         | 164         | 4WP3672            | 98"         | 184           |
|              | 5 STEP       | 50"             | 86"            | 116"                     | 24"        | 28"        | 5WP2424R           | 58"         | 106           | 5WP2436R           | 70"         | 121           | 5WP2448R           | 82"         | 152           | 5WP2460R           | 94"         | 165         | 5WP2472R           | 106"        | 178           |
|              | 5 STEP       | 50"             | 86"            | 116"                     | 36"        | 40"        | 5WP3624R           | 58"         | 136           | 5WP3636R           | 70"         | 184           | 5WP3648R           | 82"         | 192           | 5WP3660R           | 94"         | 210         | 5WP3672R           | 106"        | 228           |
|              | 6 STEP       | 60"             | 96"            | 126"                     | 24"        | 28"        | 6WP2424R           | 67"         | 123           | 6WP2436R           | 78"         | 136           | 6WP2448R           | 90"         | 170           | 6WP2460R           | 102"        | 184         | 6WP2472R           | 114"        | 198           |
|              | 6 STEP       | 60"             | 96"            | 126"                     | 36"        | 40"        | 6WP3624R           | 67"         | 155           | 6WP3636R           | 78"         | 173           | 6WP3648R           | 90"         | 213           | 6WP3660R           | 102"        | 233         | 6WP3672R           | 114"        | 253           |
| HANDRAILS    | 7 STEP       | 70"             | 106"           | 136"                     | 24"        | 28"        | 7WP2424R           | 75"         | 137           | 7WP2436R           | 87"         | 150           | 7WP2448R           | 99"         | 187           | 7WP2460R           | 110"        | 208         | 7WP2472R           | 122"        | 228           |
|              | 7 STEP       | 70"             | 106"           | 136"                     | 36"        | 40"        | 7WP3624R           | 75"         | 174           | 7WP3636R           | 87"         | 192           | 7WP3648R           | 99"         | 235           | 7WP3660R           | 110"        | 262         | 7WP3672R           | 122"        | 290           |

# Cotterman®

## NATIONAL SUPPORT CENTER



## Innovation and Efficiency. The **Cotterman®** way.

In 2016, Cotterman® added a 30,000 square foot facility to our Croswell, MI plant that bolsters our productivity and efficiency, while providing you with the highest quality serrated treads on the market today. With an all-new proprietary manufacturing process and warehousing facility, we are able to manufacture treads to the exact specifications of each of our ladders without sacrificing quality or production times. What's more, we are able to ship treads and other materials quickly to our 3 other branch plants in Georgia, Texas and California, by the truckload!

Our new serrated tread pushes the limits of innovation. With four-way skirting, four-corner welds and a nearly flawless surface, we've made the finest ladders in America, even better.

At Cotterman®, we never stop innovating, and never stop improving, and our new National Support Center (NSC) is certainly our newest addition to doing just that.



**The first NSC shipment of materials to a branch plant (Arlington, Texas).**  
Shown from left to right: Ryan Vallee (Shipping), Jason Nays (NSC Production), Nick Valore (President), Melissa McGhee (NSC Production) Rob Stimpson (Project Manager)

